

Community Connections Project – Prosiect Cysylltu Cymunedau



A Place Plan for Towyn & Kinmel Bay

In June 2021, Towyn and Kinmel Bay Town Council identified the need to develop and deliver a Place Plan that is centred on making the area a better place for future generations to live, work and visit. The Community Connections project was submitted for funding to UK Government, and in December 2021 it received the news that it has been successful in securing a grant from the Community Renewal Fund. The main focus of project is to:

- understand what issues the community is facing
- talk with the community about what needs to be done for the future well-being of the community
- agree priorities and the steps the community needs to take to make them happen
- establish a Community Partnership that supports future action

Why Get Involved? What are the Benefits?

- Prioritised key actions to improve the vitality of the area and the well-being of the people who live in Towyn and Kinmel Bay
- Having a good understanding of community needs and wants including the levels of support for different issues and actions
- Improved input in local planning decisions, including influencing future iterations of the Local Development Plan to ensure they meet community needs
- Enhance the working relationship between the community, the Local Authority and other key decision makers
- Improve the strength of future funding bids for community projects within the Place Plan by providing evidence of need and support amongst the wider community.
- Improve community well-being

Cynllun Creu Lleoedd i Towyn a Bae Cinmel

Ym mis Mehefin 2021, fe wnaeth Cyngor Tref Towyn a Bae Cinmel adnabod yr angen i ddatblygu a gweithredu Cynllun Creu Lleoedd sy'n canolbwyntio ar wneud yr ardal yn lle gwell i fyw, gweithio ac ymweld â hi. Cyflwynwyd cais y prosiect Cysylltu Cymunedau am gyllid i Lywodraeth Prydain, ac ym mis Rhagfyr 2021 derbyniodd y newyddio iddo lwyddo i sicrhau grant o'r Gronfa Adfywio Cymunedol. Mae'r prosiect yn canolbwyntio'n bennaf ar y canlynol:

- deall pa broblemau mae'r gymuned yn eu hwynebu
- siarad gyda'r gymuned ynghylch beth sydd angen ei wneud er lles y gymuned yn y dyfodol
- cytuno ar flaenoriaethau a champau sydd angen i'r gymuned eu cymryd i beri iddynt ddigwydd
- sefydlu Partneriaeth Gymunedol sy'n cefnogi gweithredu yn y dyfodol

Pam cymryd rhan? Beth yw'r manteision?

- Blaenoriaethu camau allweddol i wella hyfywedd yr ardal a llesiant y bobl sy'n byw yn Towyn a Bae Cinmel
- Cael dealltwriaeth dda o anghenion a dymuniadau'r gymuned gan gynnwys graddau'r cymorth at wahanol faterion a champau
- Gwella llais mewn penderfyniadau cynllunio lleol, gan gynnwys dylanwadu ar addasiadau o'r Cynllun Datblygu Lleol yn y dyfodol i sicrhau ei fod yn diwallu anghenion y gymuned
- Gwella'r berthynas waith rhwng y gymuned, yr Awdurdod Lleol a phenderfynwyr allweddol eraill
- Gwella cryfder ceisiadau am gyllid i brosiectau cymunedol o fewn y Cynllun Creu Lleoedd yn y dyfodol trwy ddarparu tystiolaeth o angen a chefnogaeth yn y gymuned ehangach
- Gwella llesiant cymunedol

TKB



UK Government Wales
Llywodraeth y DU Cymru

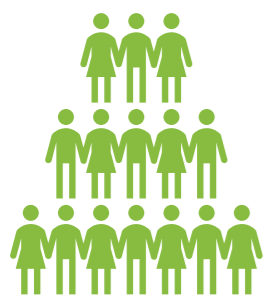
This Community Connections project is funded by the UK Government through the UK Community Renewal Fund
Ariennir y prosiect hwn gan Lywodraeth y DU drwy Gronfa Adnewyddu Cymunedol y DU

TKB

Issues and Opportunities – Heriau a Chyfleoedd

As part of a Place Plan its good to understand what are the key issues and opportunities Towyn and Kinmel Bay has. This helps us to understand what is good about the place and what we need to work harder at. These are some facts we know.

Fel rhan o Gynllun Creu Lleoedd mae'n dda deall y prif heriau a chyfleoedd sy'n wynebu Towyn a Bae Cinmel. Mae hyn yn ein helpu ni i ddeall beth sy'n dda am y lle a beth sydd angen inni weithio'n galetach arno. Dyma rai ffeithiau a wyddom.



People over the age of 65 tend to live here more than other places in Wales/Mae cyfran uwch o bobl dros 65 oed yn byw yma nag mewn lleoedd eraill yng Nghymru

People tend to work more in retail, accommodation, food and services and health and social care/Mae pobl yn fwy tueddol o weithio mewn sioopau, llety, bwyd a gwasanaethau ac iechyd a gofal cymdeithasol



When looking at those parts of the community that face the most challenges, the Sandy Cove area experiences challenges with education, health and community safety being high/Wrth edrych ar y rhannau o'r gymuned sy'n wynebu'r mwyaf o heriau, mae ardal Sandy Cove yn profi heriau mawr gydag addysg, iechyd a diogelwch cymunedol.



People tend to commute to a place in a different local authority areas such as Denbighshire/Mae pobl yn tueddu i deithio i'r gwaith i le mewn sir arall fel Sir Ddinbych

The physical environment is rated as low in terms of quality of space, amenity value and setting/Caiff yr amgylchedd ffisegol ei raddio'n isel o safbwynt ansawdd y lle, gwerth amwynderol a lleoliad



Some people have higher than average long term health problems or disabilities/Mae gan gyfran uwch na'r cyfartaledd o bobl broblemau iechyd neu anabledau hirdymor



Where crime is committed this relates to violence, public order, criminal damage and related incidents/Lle mae troseddau, mae'n ymwneud â thrais, y drefn gyhoeddus, difrod troseddau a digwyddiadau cysylltiedig

Traffic on the A548

Climate Change and Flooding

Spaces and places for young people

Enterprise space for small businesses

Traffig ar yr A548

Newid Hinsawdd a Llifogydd

Llecynnau a lleoedd i bobl ifanc

Lleoedd mentro i fusneau bach

Opportunities – Cyfleoedd



- One of the largest markets in North Wales
- Develop the leisure/experience economy
- Some iconic buildings
- Some attractions that are unique to the area - racetrack etc
- Some space could be brought back to community uses
- Meanwhile use of underused space - there is lots knocking around
- Active travel
- Garden city vision
- Using TKBVOICE as a connector
- Ageing population means volunteers to be brought in
- Foundational economy initiatives
- Small independent businesses which give the place identity

- Un o'r marchnadoedd mwyaf yn y Gogledd
- Datblygu'r economi hamdden/profiadau
- Rhai adeiladau eiconig
- Rhai atyniadau sy'n unigryw i'r ardal - trac rasio etc
- Gellid dod â rhai lleoedd yn ôl i ddibenion cymunedol
- Yn y cyfamser defnyddio lleoedd a danddefnyddir - mae llawer ohonynt
- Teithio llesol
- Gweledigaeth o ddinas gerddi
- Defnyddio TKBVOICE fel cysylltydd
- Poblogaeth sy'n heneiddio yn golygu'r angen am ddod â gwirfoddolwyr i mewn
- Mentrau economi sylfaenol
- Busnesau annibynnol bach sy'n rhoi hunaniaeth i'r lle



This Community Connections project is funded by the UK Government through the UK Community Renewal Fund
Ariennir y prosiect hwn gan Lywodraeth y DU drwy Gronfa Adnewyddu Cymunedol y DU



What Makes the Place? – Beth sy'n Gwneud y Lle?

- ❑ Resident population of some 8,500 swells to 50,000 in the height of the summer.
- ❑ 2 'communities' linked and dominated by the A548.
- ❑ Sporadic pockets of built development built over time in a piecemeal fashion with little street structure.
- ❑ Lack of quality destinations or offer e.g. dated pubs and restaurants with little in the way of historic core.
- ❑ Caravan parks and railway makes access to beach and coastline feel cut off and private.
- ❑ Necessary but utilitarian and unattractive sea/flood defences.
- ❑ Fortunate in terms of open space including the dunes, coast, river, Tir Prince Park and an area of natural space (Parc Hanes).
- ❑ Wide A548 offers plentiful opportunities to reclaim space and tarmac with the view to create place and destination. Areas for dwell and landscaping.
- ❑ Flat topography benefits active travel – opportunity for strategic linkages.
- ❑ Opportunity to better integrate coast through positive connections and links: maybe through working with caravan park?



- ❑ Poblogaeth breswyl o tua 8,500 yn chwyddo i 50,000 yn anterth yr haf.
- ❑ 2 'gymuned' wedi eu cysylltu â'i gilydd o bobtu i'r A548.
- ❑ Pcedi yma ac acw o ddatblygiadau wedi eu hadeiladu dros amser mewn modd tameidiog heb fawr o strwythur strydoedd.
- ❑ Diffyg cyrchfannau na chynnig o safon ee tafarndai a thai bwyta wedi dyddio heb fawr o graidd hanesyddol.
- ❑ Meysydd carafannau a'r rheilffordd yn ei gwneud yn anodd mynd i lan y môr, sy'n ymddangos fel pe bai'n breifat ac ar wahân.
- ❑ Amddiffynfeydd môr/llifogydd angenrheidiol ond anneniadol.
- ❑ Ffodus o ran llecynnau agored gan gynnwys y twyni, arfordir, afon, Parc Tir Prince ac ardal o lecyn naturiol (Parc Hanes).
- ❑ Yr A548 lydan yn cynnwys digon o gyfleoedd i adennill lle a tarmac i greu teimlad o le a chyrchfan, lleoedd i dreulio amser a thirlunio.
- ❑ Topograffeg gwastad o fudd i deithio llesol – cyfle am gysylltiadau strategol.
- ❑ Cyfle i integreiddio'r arfordir yn well trwy gysylltiadau cadarnhaol: efallai trwy weithio gyda'r parc carafannau?



This Community Connections project is funded by the UK Government through the UK Community Renewal Fund
Ariennir y prosiect hwn gan Lywodraeth y DU drwy Gronfa Adnewyddu Cymunedol y DU



What You Told Us – Eich Sylwadau Chi



During April 2022, the Community Connection project provided a number of opportunities for the local community to have their say on issues and ideas. This included talks to the local infants and primary schools, a community roadshow during the 1st and 2nd April, writing and handing in comments on a postcard, pinning comments to a digital map as well as emailing the project.

Who Spoke to Us



Almost 600 comments received



Over 120 face to face conversations

What do People Like About TKB?

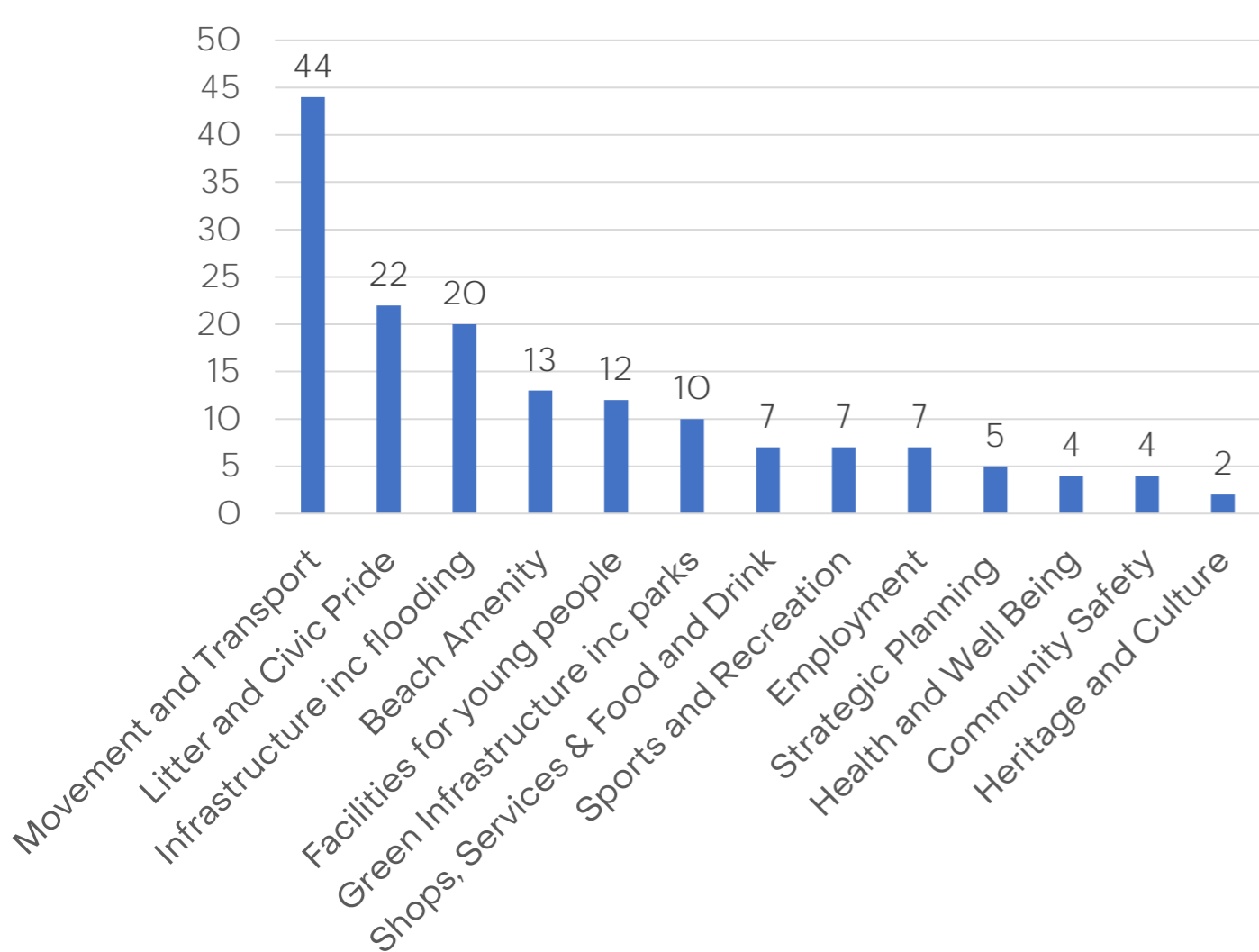


What Needs Improving



What are the Priority Issues?

These are some the issues from the wider community that were identified during the consultation.



Yn ystod mis Ebrill 2022, rhoddodd y prosiect Cysylltu Cymunedau nifer o gyfleoedd i'r gymuned leol i roi eu barn ar faterion a syniadau. Roedd y rhain yn cynnwys sgysiau gyda'r ysgolion babanod a chynradd lleol, sioe deithiol gymunedol yn ystod 1 a 2 Ebrill, ysgrifennu a chyflwyno sylwadau ar gerdyn post, gosod sylwadau ar fap digidol yn ogystal ag e-bostio'r prosiect.

Pwy Siaradodd gyda Ni



Derbyniwyd bron i 600 o sylwadau



Dros 120 o sgysiau wyneb yn wyneb

Beth mae pobl yn ei hoffi am y lle?

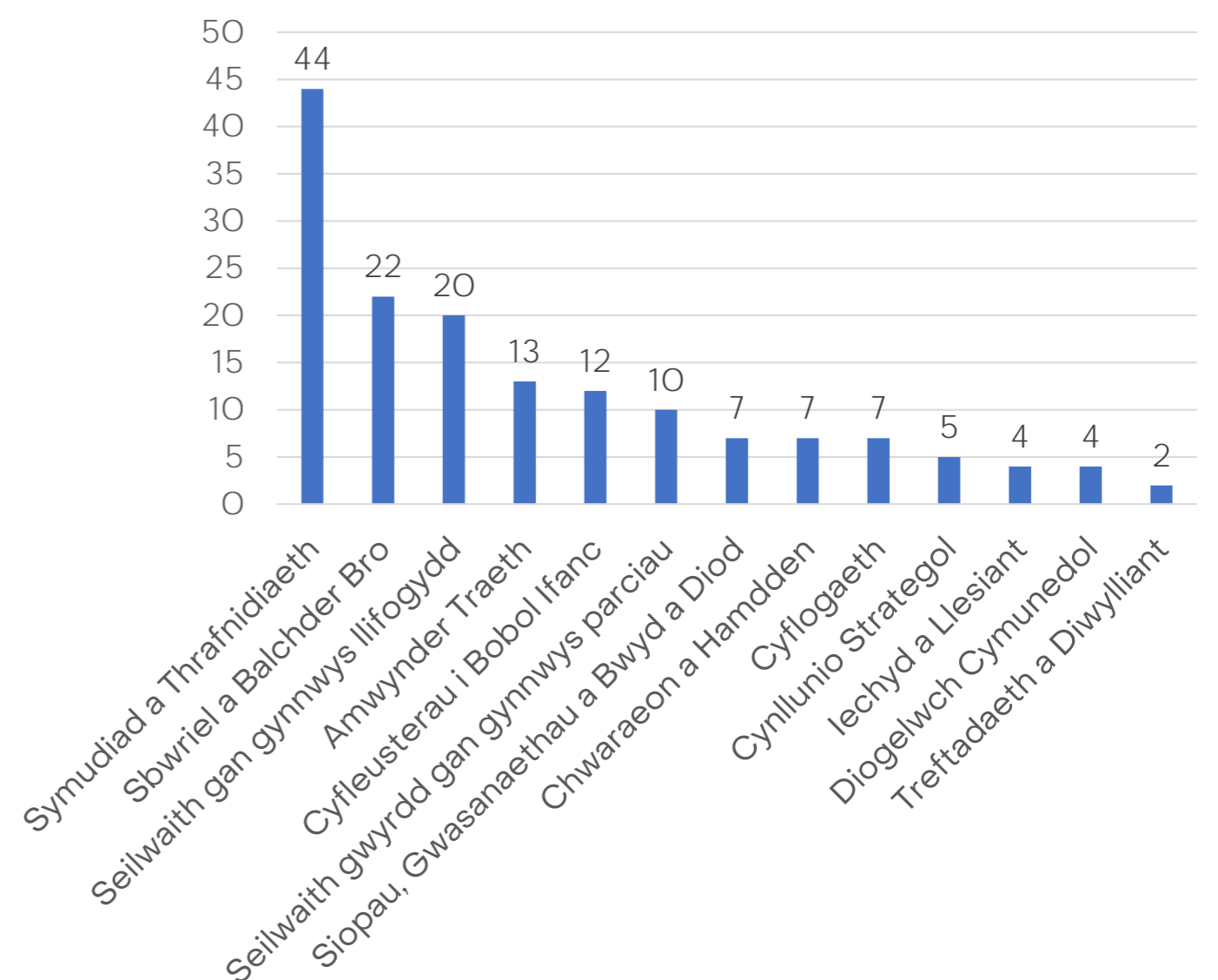


Beth sydd angen ei wella



Beth yw'r Materion i'w Blaenoriaethu?

Dyma rai o'r materion o'r gymuned ehangach a nodwyd yn ystod yr ymgynghoriad.



To see a full report of consultation, please visit www.tkbvoice.wales

I weld adroddiad llawn o'r ymgynghoriad, ewch i www.tkbvoice.wales



This Community Connections project is funded by the UK Government through the UK Community Renewal Fund
Ariennir y prosiect hwn gan Lywodraeth y DU drwy Gronfa Adnewyddu Cymunedol y DU



Our Vision for TKB – Ein Gweledigaeth Ni

Towyn and Kinmel Bay is a cohesive place that can be explored from the sea to its streets to its green space with a string of communities that is active, enterprising and healthy

Mae Towyn a Bae Cinmel yn lle y gellir ei grwydro o'r môr i'w strydoedd i'w lecynnau gwyrdd gyda chyfres o gymunedau sy'n egnïol, mentrus a iach

- 1 Balancing needs of residents whilst respecting heritage of tourism and visitor economy
- 2 A resilient place where coast meets land supported by essential infrastructure
- 3 A relaxed place of well-being for all that is accessible and inclusive for all
- 4 Community passion that is about getting things done

- 1 Cydbwysu anghenion trigolion gan barchu treftadaeth twristiaeth a'r economi ymwelwyr
- 2 Lle mae'r arfordir yn cyfarfod y tir a lle a gaiff ei gadarnhau gan seilwaith hanfodol
- 3 Lle llesol i ymlacio i bawb, sy'n hygyrch a chynhwysol i bawb
- 4 Bwrlwm cymunedol sy'n cyflawni pethau

Our Focus – Ein Pwyslais

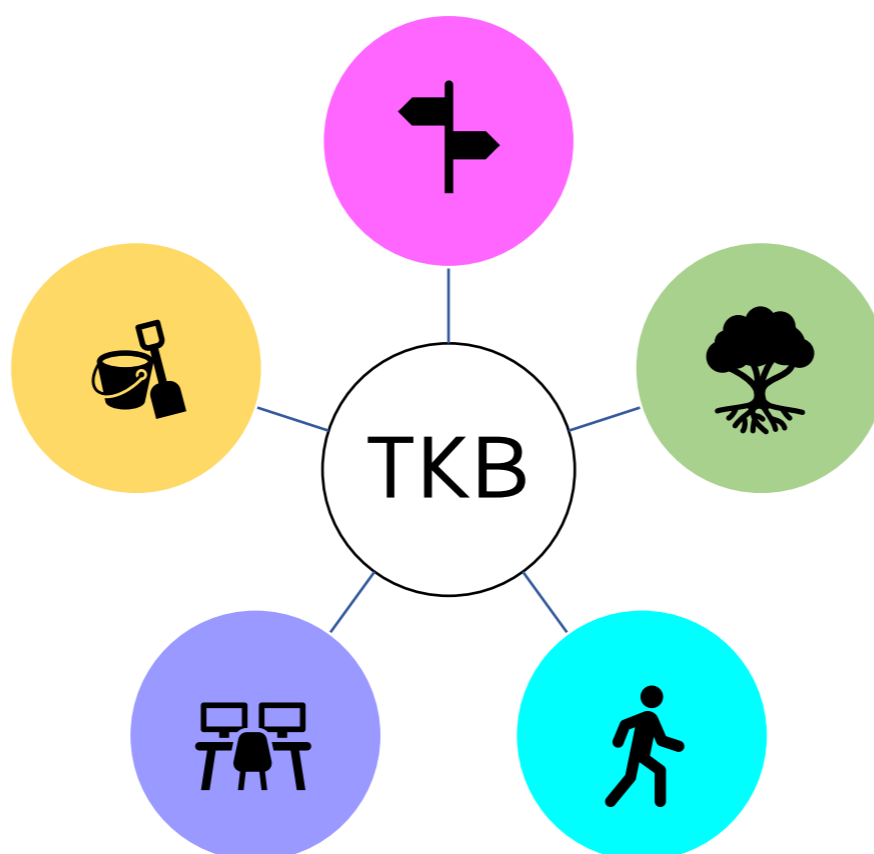
A Resourced TKB – social, health, cultural, local services and educational infrastructure that is underpinned by environmental resilience and climate change agenda

A Greener TKB – green infrastructure and practice with people at the heart of it, that includes open spaces, parks, play, streets, paths, trails and biodiversity corridors that complements the wider place agenda

An Active TKB – to develop a connected community that is mobile and active with recreation, sports and well-being accessible to all, with roads becoming more people orientated

An Enterprising TKB – to enable local economic development that supports young people, entrepreneurs and established businesses to grow and to play a role in a sustainable economy

TKB – A Destination for All – to create a balanced place to live in and visit with the need to improve the quality of the destination experience but through local solutions that meet community needs and appeal to visitors



Tref gydag Adnoddau – gwasanaethau cymdeithasol, iechyd, diwylliannol, lleol a seilwaith addysgol a gadarnheir gan wydnwch amgylcheddol a'r agenda newid hinsawdd

Tref Wyrddach – seilwaith ac arferion gwyrdd sy'n cynnwys llecynnau agored, parciau, manau chwarae, strydoedd, llwybrau a choridorau bioamrywiaeth sy'n ategu agenda ehangach y lle a'r bobl

Tref Egnïol – datblygu cymuned gydgyssylltiedig sy'n symudol ac egnïol gyda hamdden, chwaraeon a llesiant o fewn cyrraedd i bawb, a ffyrdd yn rhoi mwy o flaenoriaeth i gerddwyr

Tref sy'n Mentro – galluogi datblygiad economaidd lleol sy'n cefnogi pobl ifanc, entrepreneuriaid a busnesau sefydledig i dyfu a chwarae rhan mewn economi gynaliadwy

Lle sy'n Gyrchfan i Bawb – creu lle cytbwys i fyw ynddo ac ymweld ag ef, gyda'r angen i wella ansawdd y profiad o'r gyrchfan ond trwy atebion lleol sy'n diwallu anghenion y gymuned ac apêl i ymwelwyr

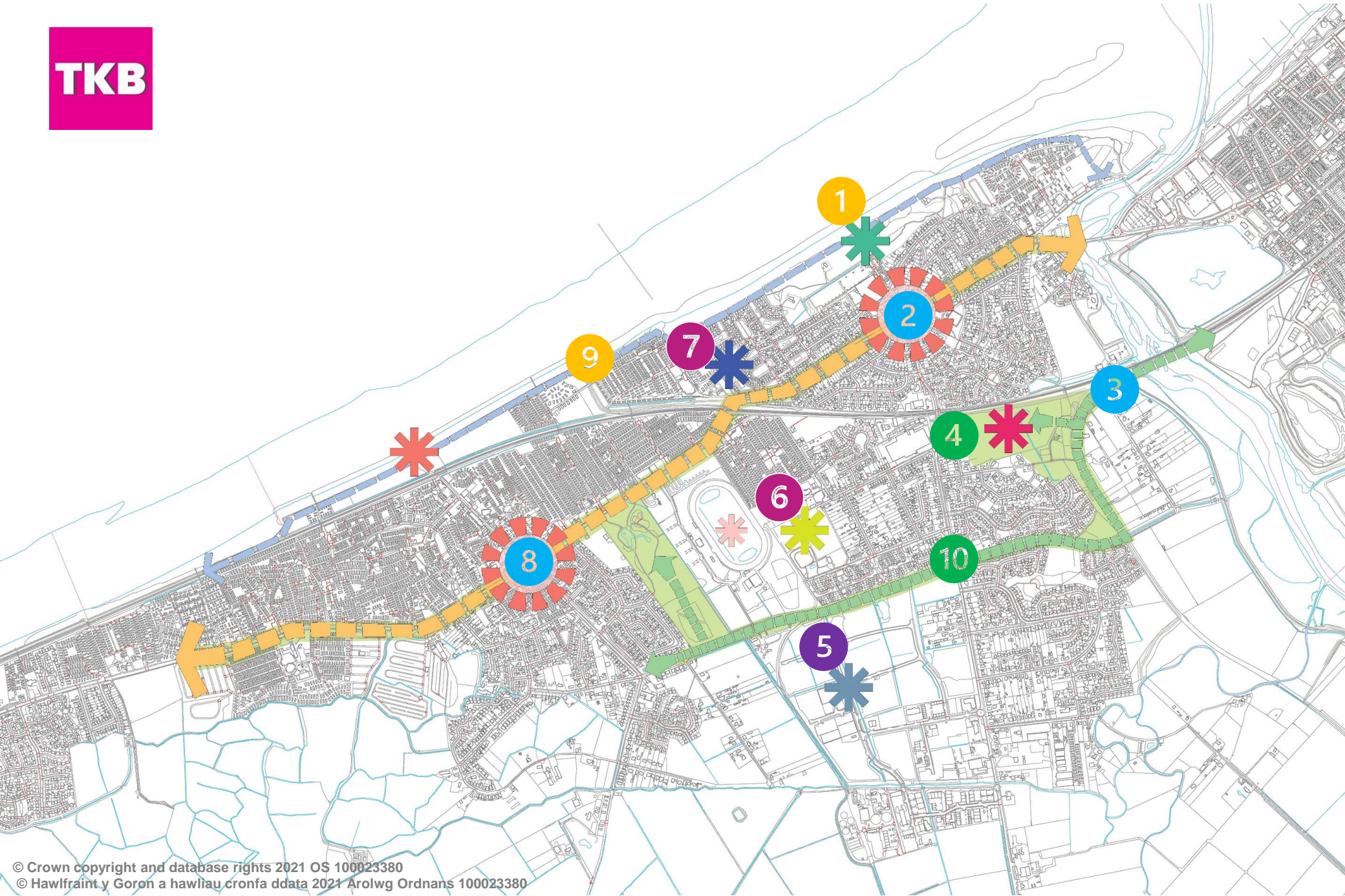
Please refer to the large plan of Towyn and Kinmel Bay which shows the proposals with their numbers relating to the more detailed explanation and where provided, drawings and images

Cyfeiriwch at y cynllun mawr o Towyn a Bae Cinmel sy'n dangos y cynigion gyda'u rhifau'n cyfeirio at yr esboniad mwy manwl, a darluniau lle maent ar gael



This Community Connections project is funded by the UK Government through the UK Community Renewal Fund
Ariennir y prosiect hwn gan Lywodraeth y DU drwy Gronfa Adnewyddu Cymunedol y DU







An Integrated TKB Learning & Well-being Hub

- Support for Y Morfa including:
 - New café and gallery area
 - Consider gym and other well-being activities
 - Support Trustees with a feasibility study process*1
- Investment on football pitch infrastructure
- Sustainable Communities for Learning Investment in Ysgol Y Foryd Infant School and Ysgol Maes Owen Primary School*2
- A flexible space for GP referral exercise resources
- Connected with the Active Travel Network

*1 subject to Y Morfa Trustees securing feasibility study funding and future capital grants
 *2 subject to Conwy County Borough Council Cabinet Approval

Canolfan Ddysgu a Llesiant Integredig i'r Dref

- Cefnogaeth i'r Morfa gan gynnwys:
 - Caffi ac oriel newydd
 - Ystyried campfa a gweithgareddau llesiant eraill
 - Cefnogi ymddiriedolwyr gyda phroses astudiaeth ddichonoldeb*1
- Buddsoddi mewn seilwaith cae pêl-droed
- Buddsoddiad Cymunedau Cynaliadwy ar gyfer Dysgu yn Ysgol Babanod y Foryd ac Ysgol Gynradd Maes Owen *2
- Lle hyblyg ar gyfer adnoddau ymarfer corff atgyfeiriadau meddygon teulu
- Cyswllt â'r Rhwydwaith Teithio Llesol

*1 amodol ar Ymddiriedolwyr y Morfa yn cael cyllid astudiaeth achos a grantiau cyfalaf yn y dyfodol
 *2 amodol ar gymeradwyaeth cabinet Cyngor Bwrdeistref Sirol Conwy



Coastal Defence and Development

- Towyn and Kinmel Bay are located on the low-lying coastal plain, most of which is in the flood risk zone identified by Natural Resources Wales. Some improvements to the coastal defences are planned to help protect existing residents from flooding, with the risk set to increase due to the effects of climate change. These improvements won't open the doors to new housing development, but the need for investment in the area is recognised in the new Local Development Plan which identifies the 'Eastern Regeneration and Investment Area'. Here the Council will encourage redevelopment of brownfield sites with new uses and innovative designs of less-vulnerable development that is suitable for the location. Also upgrading and replacement of homes to make them more resilient to the challenges of flooding and climate change will be supported here.

Policy statement from CCBC

Amddiffyn a Datblygu'r Arfordir

- Mae Towyn a Bae Cinmel wedi eu lleoli ar wastatir arfordirol, y rhan fwyaf ohono wedi'i nodi gan Gyfoeth Naturiol Cymru fel ardal ac iddi risg llifogydd. Mae rhai gwelliannau i'r amddiffynfeydd arfordirol wedi eu cynllunio i helpu amddiffyn trigolion rhag llifogydd, gyda disgwyl i'r risg gynyddu yn sgil effeithiau newid hinsawdd. Ni fydd y gwelliannau hyn yn agor y drws i ddatblygu tai newydd, ond cydnabyddir yr angen am fuddsoddi yn yr ardal gan y Cynllun Datblygu Lleol newydd sy'n dynodi'r 'Ardal Ddwyreiniol Adfywio a Buddsoddi'. Yma bydd y Cyngor yn annog ailddatblygu safleoedd tir llwyd gyda dibenion newydd a chynlluniau arloesol o ddatblygiadau llai agored i niwed sy'n addas ar gyfer y lleoliad. Hefyd cefnogir gwella cartrefi a chodi rhai newydd yn eu lle i'w gwneud yn fwy gwydn i heriau llifogydd a newid hinsawdd yma.

Datganiad polisi gan Gyngor Bwrdeistref Sirol Conwy

Sandy Cove – environmental improvements to include

- Resurfacing of road and landscaping/improved drainage
- 1.2 metre wide clay or pre-cast concrete block footways and crossing points and reinforced grass parking areas
- Lighting columns
- Shallow swales to collect water run off
- New native hedgerows
- Amenity green space with social, play, biodiversity and productive features
- New coastal tree planting



Sandy Cove – gwelliannau amgylcheddol i gynnwys

- Wyneb newydd ar y ffordd a thirlunio / gwell draeniad
- Llwybrau a manau croesi 1.2 metr o led mewn clai neu flociau concrid a lleoedd parcio glaswellt wedi'i atgyfnerthu
- Colofnau goleuadau
- Ffogydd bas i gasglu dwr rhedegog
- Gwrychoedd newydd cynhenid
- Llecyn gwyrdd amwynderol gyda nodweddion cymdeithasol, chwarae, bioamrywiaeth a chynhyrchiol
- Plannu coed arfordirol newydd

The Square – shops and services

- Design code for buildings – colours, signs and facias
- Immediate public realm – seating, activity space
- Cycle infrastructure – stands, bike mechanic station
- Linked to A548 improvements (see Active TKB)

Y Sgwâr – siopau a gwasanaethau

- Cod dylunio ar gyfer adeiladau - lliwiau, arwyddion ac arwynebau
- Lleoedd i'r cyhoedd ei rannu – seddau, lleoedd gweithgareddau
- Seilwaith beicio – lleoedd i adael beiciau, gorsaf mecanic beiciau
- Cysylltiedig â gwelliannau i'r A548 (Gweler Tref Egniol)



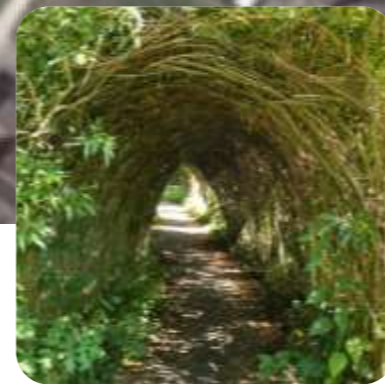
Parc Hanes Project

- Biodiversity and tree planting
- Local nature areas
- Play – informal/kick about
- Picnic areas
- Community growing space
- Community cabin – place to meet, learn, grow, doing
- Community farm
- Trails and paths
- Active travel



Prosiect Parc Hanes

- Bioamrywiaeth a phlannu coed
- Llecynnau natur lleol
- Lle anffurfiol i chwarae a chicio pêl
- Llecynnau picnic
- Lle tyfu cymunedol
- Caban cymunedol – lle i gyfarfod, dysgu, tyfu, gwneud
- Fferm gymunedol
- Llwybrau
- Teithio llesol



Connecting and Stringing together Green Infrastructure

– spaces, roads, streets, gaps and paths/trails

- Parc Hanes
- Parc Clwyd
- Parc Owain Glyndwr
- Chester Avenue Community Woodland
- Llys Emlyn Play Area (Towyn)
- St Mary's Church land r/o
- Including young peoples' play

* Subject to land transfer from Welsh Government



Growing projects

- Various sites, buildings, spaces and streets that are underused
- Growing at home – from window boxes to garden space
- Links to people based activities – schools, young people, residents, care homes – learning and growing together



Street based projects

- Integrated design approach with Green Infrastructure, Biodiversity and use of sustainable urban drainage as well as growing projects on bus shelters, highway verges,
- Signage, trails, interpretation



Cysylltu a Chlymu ynghyd Seilwaith Gwyrdd

– llecynnau, fffyrdd, strydoedd, bylchau a llwybrau

- Parc Hanes
- Parc Clwyd
- Parc Owain Glyndwr
- Coetir Cymunedol Rhodfa Caer
- Lle Chwarae Llys Emlyn (Towyn)
- Tir Eglwys y Santes Fair*
- Gan gynnwys lle chwarae i bobl ifanc

* Amodol ar drosglwyddo tir gan Lywodraeth Cymru

Prosiectau tyfu

- Amrywiol safleoedd, adeiladau, llecynnau a strydoedd a gaiff eu tanddefnyddio
- Tyfu gartref – o flychau ffenest i lecynnau mewn gerddi
- Cysylltiadau â gweithgareddau seiliedig ar bobl – ysgolion, pobl ifanc, trigolion, cartrefi gofal – dysgu a thyfu gyda'i gilydd

Prosiectau stryd

- Dull dylunio integredig gyda Seilwaith Gwyrdd, Bioamrywiaeth a defnydd o draeniad trefol cynaliadwy yn ogystal â phrosiectau tyfu ar gysgodfannau bws, ymylon priffyrdd
- Arwyddion, llwybrau, dehongli

An Active TKB – Tref Egniol



2

The A548 from a road to a Coastal Avenue

- Street based design approach
- Improved pedestrian crossing opportunities
- More space to dwell
- More trees, planting, natural landscaping and use of sustainable urban drainage
- Welcome to signs

Troi ffordd yr A548 yn Goedlan Arfordirol

- Dull dylunio ar sail stryd
- Gwell cyfleoedd croesi i gerddwyr
- Mwy o le i dreulio amser
- Mwy o goed, planhigion, tirlunio naturiol a defnydd o draenio trefol cynaliadwy
- Arwyddion croeso



Delivering the Active Travel Integrated Network

- River Clwyd bridge connection with Parc Hanes and Kinmel Bay
- The Ddöll link (East to West) with Towyn
- Cycle infrastructure
 - Crossings
 - Bike mechanic stations
 - Stands and lockers
 - Explore feasibility of a community bike/scooter scheme or a community tuk tuk initiative

Gweithredu'r Rhwydwaith Integredig Teithio Llesol

- Pont dros Afon Clwyd i gysylltu â Parc Hanes a Bae Cinnel
- Cyswllt y Ddöll (Dwyrain i'r Gorllewin) gyda Towyn
- Seilwaith beicio
 - Croesfannau
 - Gorsafoedd mecanic beiciau
 - Lleoedd gadael beiciau a loceri
 - Archwilio dichonoldeb cynllun beiciau / sgwteri cymunedol neu fenter *tuk tuk* cymunedol

3

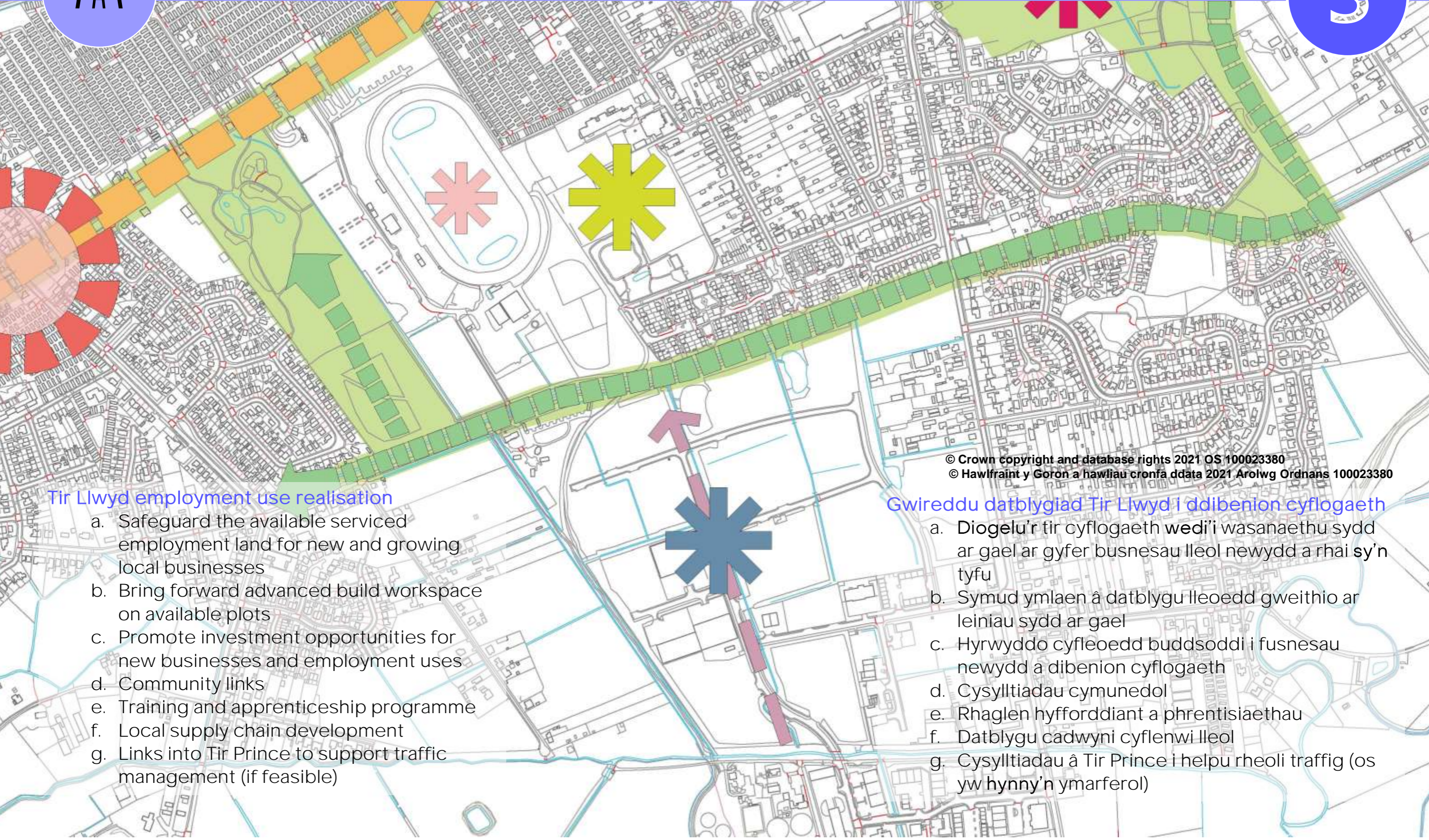
The Towyn Crossroads

- Street based design approach
- Improved pedestrian crossing opportunities
- Improved streetscene
- Remodel brick kiosk structures
- More space to dwell
- More trees, planting, natural landscaping and use of sustainable urban drainage

Croesffordd Towyn

- Dull dylunio seiliedig ar stryd
- Gwell cyfleoedd croesi i gerddwyr
- Gwell strydlun
- Ailfodelu adeiladwaith ciosgau briciau
- Mwy o le i dreulio amser
- Mwy o goed, planhigion, tirlunio naturiol a'r defnydd o draeniad trefol cynaliadwy

8



© Crown copyright and database rights 2021 OS 100023380
© Hawlfraint y Goron a hawliau cronfa ddata 2021 Arolwg Ordnans 100023380

Tir Llwyd employment use realisation

- Safeguard the available serviced employment land for new and growing local businesses
- Bring forward advanced build workspace on available plots
- Promote investment opportunities for new businesses and employment uses
- Community links
- Training and apprenticeship programme
- Local supply chain development
- Links into Tir Prince to support traffic management (if feasible)

Gwireddu datblygiad Tir Llwyd i ddibenion cyflogaeth

- Diogelu'r tir cyflogaeth wedi'i wasanaethu sydd ar gael ar gyfer busnesau lleol newydd a rhai sy'n tyfu
- Symud ymlaen â datblygu lleoedd gweithio ar leiniau sydd ar gael
- Hyrwyddo cyfleoedd buddsoddi i fusnesau newydd a dibenion cyflogaeth
- Cysylltiadau cymunedol
- Rhaglen hyfforddiant a phrentisiaethau
- Datblygu cadwyni cyflenwi lleol
- Cysylltiadau â Tir Prince i helpu rheoli traffig (os yw hynny'n ymarferol)

Tir Prince – quality, year round destination

- Continued operator investment/plans
- Themed markets, events and activities
- Integration within community
- School of Fun Fairs – training and excellence



Tir Prince – cyrchfan o safon, drwy'r flwyddyn

- Parhau gyda chynlluniau a buddsoddi
- Marchnadoedd, digwyddiadau a gweithgareddau thematig
- Integreiddio yn y gymuned
- Ysgol Ffeiriau Hwyl – hyfforddiant a rhagoriaeth

Start up and Grow on provision

- Improvement and refurbishment of existing business sites and premises including those that have become outdated and unsuitable for modern employment activity.

Darpariaeth Cychwyn a Thyfu

- Gwella ac adnewyddu safleoedd busnes presennol gan gynnwys y rheini sydd wedi dyddio ac sy'n anaddas ar gyfer gweithgarwch cyflogaeth modern.

Coastal enterprises support and development

- Develop business clusters
 - Lifestyle
 - Upcycle beach waste
 - Bike/walk
 - Well-being
 - Food and drink
 - Community growing
- Mix of sole traders and social enterprises
- Business to business networking
- Short supply chain procurement policy and practice



Cefnogi a datblygu mentrau arfordirol

- Datblygu clystyrau busnes
 - Ffordd o fyw
 - Uwchgylchu gwastraff traeth
 - Beicio/cerdded
 - Llesiant
 - Bwyd a diod
 - Tyfu cymunedol
- Cymysgedd o unig fasnachwyr a mentrau cymdeithasol
- Rhwydweithio busnes i fusnes
- Polisi ac arferion caffael trwy gadwyni cyflenwi byr

Co-working space feasibility

- Demand and supply
- Existing asset use
- Options to consider include co-locating space within surplus employment space, within local businesses and community venues.
- Cluster approach with other local suppliers



Astudio dichonoldeb lleoedd gweithio ar y cyd

- Galw a chyflenwad
- Defnydd presennol o asedau
- Y dewisiadau i'w hystyried yn cynnwys lleoedd cydleoli o fewn manau cyflogaeth sydd dros ben, o fewn busnesau lleol a safleoedd cymunedol
- Clystyru gyda chyflenwyr lleol eraill

A Destination for All – Cyrchfan i Bawb



1

9

Kinmel Bay Beach – Destination focus

- Improved arrival and setting
- Car park has a better layout
- Improved access to the beach
- Promenade
 - Managing walk/cycle provision
 - Litter and cleansing
 - Signage
- Dwell area
- Mini hub
 - Food and drink
 - Seaside retail
 - Toilets
 - Event space – day and evening

Traeth Bae Cinmel – Canolbwynt y Gyrchfan

- Gwella'r cyrhaeddiad
- Gwell cynllun i'r maes parcio
- Gwell mynediad at y traeth
- Promenad
 - Rheoli'r ddarpariaeth cerdded/beicio
 - Sbwriel a glanhau
 - Arwyddion
- Lle i dreulio amser
- Canolfan fach
 - Bwyd a diod
 - Siop lan môr
 - Toiletau
 - Lle i ddigwyddiadau – dydd a nos



Welcome to "Towyn" and "Kinmel Bay" signage - artform

- Blue Bridge
- Where Towyn meets Kinmel Bay
- Explore if LoveTKB is the brand to use in signage
- Link this signage into A548 improvements and Coastal Avenue approach



Arlunwaith arwyddion croeso i "Towyn" a "Bae Cinmel"

- Y Bont Las
- Lle mae Towyn yn cyfarfod Bae Cinmel
- Arbrofi i weld ai 'CaruTKB' yw'r brand i'w ddefnyddio mewn arwyddion
- Cysylltu'r arwyddion hyn â gwelliannau i'r A548 a'r dull Coedlan Arfordirol

TKB Events

- Half marathon – Llandudno to Kinmel Bay
- Triathlon, open water swimming, kite surfing
- Music, arts, theatre at Kinmel Bay beach hub
- Promote Wales Coastal Path and National Cycle Route Number 4
- Community based events



Digwyddiadau TKB

- Hanner marathôn – Llandudno i Bae Cinmel
- Triathlon, nofio dwr agored, syrffio barcud
- Cerddoriaeth, celfyddydau, theatr yng nghanolfan traeth Bae Cinmel
- Hyrwyddo Llwybr Arfordir Cymru a Llwybr Beicio Cenedlaethol Rhif 4
- Digwyddiadau cymunedol

Tir Prince – quality, year round destination

- Continued operator investment/plans
- Themed markets, events and activities
- Integration within community



Tir Prince – cyrchfan o safon, drwy'r flwyddyn

- Parhau gyda chynlluniau a buddsoddi
- Marchnadoedd, digwyddiadau a gweithgareddau thematig
- Integreiddio yn y gymuned

Heritage, history, culture trails

- Develop an integrated series of trails that tell the TKB story for local residents and visitors
- Mixture of wayfinding, interpretation tiles, use of QR codes link to audio and VR based experiences



Community led tourism initiatives

- Community partnership to develop ambassadors and initiatives

Llwybrau treftadaeth, hanes, diwylliant

- Datblygu cyfres integredig o lwybrau sy'n dweud stori Towyn a Bae Cinmel i drigolion lleol ac ymwelwyr
- Cymysgedd o ddilyn trywydd, teiliau dehongli, defnyddio codau QR i gysylltu a sain a phrofiadau rhithwir

Mentrau twristiaeth cymunedol

- Partneriaeth gymunedol i ddatblygu llysgenhadon a mentrau



This Community Connections project is funded by the UK Government through the UK Community Renewal Fund
Ariennir y prosiect hwn gan Lywodraeth y DU drwy Gronfa Adnewyddu Cymunedol y DU



A People Centred Plan – Cynllun ar gyfer Pobl

As well as proposals that relate to spaces, buildings, specific sites and roads, there are also a number of people centred activities that the Place Plan needs to support.

Yn ogystal â chynigion sy'n ymwneud â llecynnau, adeiladau, safleoedd penodol a ffyrdd, mae hefyd nifer o weithgareddau sy'n canolbwyntio ar bobl – sy'n ofynnol i'r Cynllun Creu Lleoedd eu cefnogi.

1. Buy local, shop local, invest local, work local grow local, socialise local campaign
 - a. Digital campaign
 - b. Loyalty scheme
 - c. Taster/events
 - d. Business to Business networks
 - e. Pop up/meanwhile events – Beach, Tir Prince market
2. Voluntary organisation support and development by developing a hub and spoke approach through the community partnership
3. Continue with local news through TKBVoice that is digital and in print that connects people and groups



1. Ymgyrch prynu'n lleol, siopa'n lleol, buddsoddi'n lleol, gweithio'n lleol, tyfu'n lleol, cymdeithasu'n lleol
 - a. Ymgyrch ddigidol
 - b. Cynllun teyrngarwch
 - c. Digwyddiadau blasu
 - d. Rhwydweithiau Busnes i Busnes
 - e. Digwyddiadau dros dro / cyfamserol – y Traeth, marchnad Tir Prince
2. Cefnogi a datblygu sefydliadau gwirfoddol trwy ddatblygu dull o'r canol i'r cyrion trwy'r bartneriaeth gymunedol
3. Parhau gyda newyddion lleol trwy TKBVoice yn ddigidol ac mewn print sy'n cysylltu pobl a grwpiau

1. Keep TKB Tidy – Place Champions
2. Social prescribing through Green Infrastructure
3. Age friendly spaces includes dementia awareness in the planning and design of physical projects
4. Farm to fork activity – learn to grow
5. Local schools' educational activity
6. Social enterprise – honey, vegetables, weaving, bike/car mechanics, householder repairs, amongst other areas
7. Pilot activities:
 - a. Community supper clubs – proof of demand and concept for permanent use
 - b. Tester space for food and drink



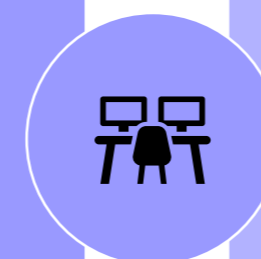
1. Cadw Towyn a Bae Cinmel yn Daclus – Hyrwyddwyr Lleol
2. Rhagnodi cymdeithasol trwy Seilwaith Gwyrdd
3. Sicrhau llecynnau sy'n addas i bob oed gan gynnwys ymwybyddiaeth o dementia wrth gynllunio prosiectau ffisegol
4. Gweithgarwch o'r pridd i'r plât – dysgu tyfu
5. Gweithgarwch addysgol ysgolion lleol
6. Mentergarwch gymdeithasol – mêl, llysiâu, gwehyddu, mechanics beiciau/ceir, atgyweirio cartrefi, ymysg meysydd eraill
7. Gweithgareddau peilot:
 - a. Clybiau swper cymunedol – profi'r galw a'r cysyniad ar gyfer ei ddefnyddio'n barhaol
 - b. Lleoedd profi ar gyfer bwyd a diod

1. Well-being walking clubs
 - a. Circuits and loops
 - b. Dropping into cafes
2. Cycle clubs/training/basic mechanics
3. Outdoor leisure activities network
4. Develop well-being led events – e.g. open water swimming
5. Tuk Tuk inter-generational project
6. GP referral active clubs – linked to Y Morfa leisure
7. Food delivery to elderly e.g. Hubbub



1. Clybiau cerdded llesiant
 - a. Cylchdeithiau
 - b. Caffis galw heibio
2. Clybiau beicio/hyfforddi/mecanwaith sylfaenol
3. Rhwydwaith gweithgareddau hamdden awyr agored
4. Datblygu digwyddiadau llesiant – ee nofio dwr agored
5. Prosiect Tuk Tuk rhwng y cenedlaethau
6. Clybiau llesol atgyfeiriadau meddygon teulu – ar y cyd â hamdden Y Morfa1
7. Dosbarthu bwyd i'r henoed ee Hubbub

1. TKB Business Club development
2. Local supplier framework promotion and events
3. Link into buy local, shop local, invest local, work local, grow local, socialise local campaign and networks
4. Start up and grown advice – link to markets, empty space, beach hub tester space
5. Youth markets at Tir Prince
6. Further education/higher education links training:
 - a. Food & Drink
 - b. Event Management
 - c. Visitor Economy



1. Datblygu Clwb Busnes Towyn a Bae Cinmel
2. Hyrwyddo a digwyddiadau fframwaith cyflenwyr lleol
3. Cysylltu ag ymgyrch a rhwydweithiau prynu'n lleol, siopa'n lleol, buddsoddi'n lleol, gweithio'n lleol, tyfu'n lleol, cymdeithasu'n lleol
4. Cyngor ar gychwyn a thyfu busnesau – cyswllt â marchnadoedd, lleoedd gwag, llecynnau blasu ar y traeth
5. Marchnadoedd Pobl Ifanc yn Tir Prince
6. Cysylltiadau hyfforddiant addysg bellach/addysg uwch:
 - a. Bwyd a Diod
 - b. Rheoli Digwyddiadau
 - c. Economi Ymwelwyr

1. Build brand and positioning with supporting material
2. Community tourism ambassadors
 - a. Coaching, mentoring and learning
 - b. Activity and project development
3. Coastal passport – walk and cycle and train
 - a. Llandudno to TKB
 - b. TFW partner
 - c. Brompton bike scheme
4. Event development – from coast to rural – volunteer training and support
5. Holiday park partnering – TKB welcome pack, calendar of events and activities – piloting ideas – bike/scooter hire



1. Datblygu brand a deunydd hyrwyddo
2. Llysgenhadon twristiaeth cymunedol
 - a. Hyfforddi, mentora a dysgu
 - b. Datblygu gweithgareddau a phrosiectau
3. Pasport arfordirol – cerdded a beicio a thrên
 - a. Llandudno i Towyn a Bae Cinmel
 - b. Partner Trafnidiaeth Cymru
 - c. Cynllun beiciau Brompton
4. Datblygu digwyddiadau – o'r arfordir i gefn gwlad – hyfforddi a chefnogi gwirfoddolwyr
5. Partneriaeth parciau gwyliau – pecyn croeso Towyn a Bae Cinmel, calendr digwyddiadau a gweithgareddau – treialu syniadau – llogi beic/sgwter

Have Your Say – Rhowch Eich Barn

This is your opportunity to have you say on the future well-being of Towyn and Kinmel Bay.

Whether you are at one of our community events or viewing this on our website, we'd like to hear your views. You can do this in a number of ways:

- At the community consultation event on the 26th and 27th May
- On our website by rating the proposals on our digital map
- By completing the postcard on our website
- By emailing us at info@tkbvoice.wales

You have until **Friday, 10th of June** to make comments.

Once we have your feedback we will refine the Place Plan before a final presentation to the Community Partnership and the Town Council.

Next Steps

June will be an important time for the community, as we start to think about:

- How are we going to work together?
- What are our priorities?
- Are there some easy actions?
- What do we start with?
- What are the more complex ones?
- How do we develop these?

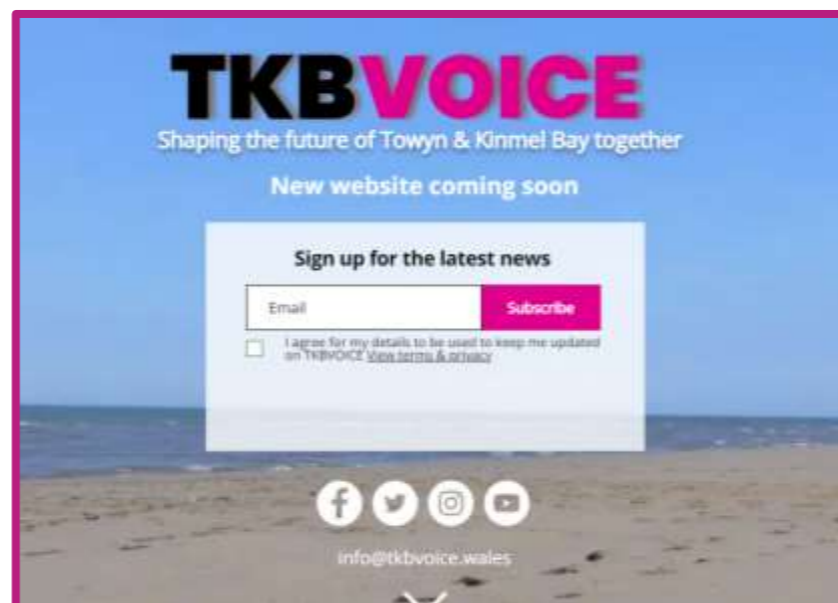
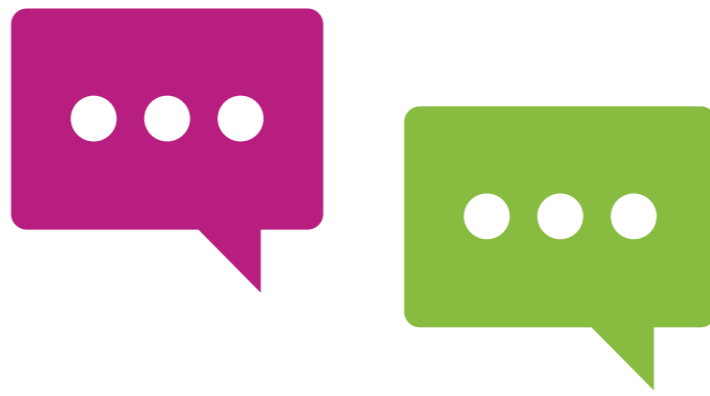
Before the Summer holidays, we'll look at where we can make a start on developing and delivering the Place Plan proposals.

Remember if you want to get involved, please email us so we can add you to our mailing list.

*Thank you for caring about
TKB's future*



Facebook: [tkbvoice](https://www.facebook.com/tkbvoice)
Twitter: [@TkbVoice](https://twitter.com/TkbVoice)
Instagram: [tkbvoice](https://www.instagram.com/tkbvoice)
YouTube: [TKBVOICE](https://www.youtube.com/channel/UCBVOICE)



Members of the Towyn and Kinmel Bay Community Partnership / Aelodau Partneriaeth Gymunedol Towyn a Bae Cinnel

Dyma'ch cyfle i roi eich barn ar lesiant Towyn a Bae Cinnel yn y dyfodol.

Boed chi yn un o'n digwyddiadau cymunedol neu'n gweld hwn ar ein gwefan, hoffem glywed eich barn. Gallwch wneud hyn mewn nifer o ffyrdd:

- Yn y digwyddiad ymgynghori â'r gymuned ar 26 a 27 Mai
- Ar ein gwefan trwy raddio ein cynigion ar ein map digidol
- Trwy gwblhau'r cerdyn post ar ein gwefan
- Trwy ein e-bostio ar info@tkbvoice.wales

Mae gennych hyd at **ddydd Gwener, 10 Mehefin** i wneud sylwadau.

Unwaith y cawn eich ymateb, byddwn yn addasu'n Cynllun Creu Lleoedd cyn gwneud cyflwyniad terfynol i'r Bartneriaeth Gymunedol a'r Cyngor Tref.

Y Camau Nesaf

Bydd mis Mehefin yn amser prysur i'r gymuned, wrth inni gychwyn meddwl:

- Sut ydym am weithio gyda'n gilydd?
- Beth yw ein blaenoriaethau?
- A oes unrhyw gamau hawdd?
- Gyda beth ydym ni'n cychwyn?
- Beth yw'r rhai mwyaf cymhleth?
- Sut ydym yn datblygu'r rhain?

Cyn gwyliau'r haf, byddwn yn edrych ar lle gallwn gychwyn datblygu a gweithredu cynigion y Cynllun Creu Lleoedd.

Cofiwch, os oes arnoch eisiau cymryd rhan, e-bostiwch ni fel y gallwn eich ychwanegu at ein rhestr.

*Diolch am eich diddordeb yn
nyfodol Towyn a Bae Cinnel*



Facebook: [tkbvoice](https://www.facebook.com/tkbvoice)
Twitter: [@TkbVoice](https://twitter.com/TkbVoice)
Instagram: [tkbvoice](https://www.instagram.com/tkbvoice)
YouTube: [TKBVOICE](https://www.youtube.com/channel/UCBVOICE)



This Community Connections project is funded by the UK Government through the UK Community Renewal Fund
Ariennir y prosiect hwn gan Lywodraeth y DU drwy Gronfa Adnewyddu Cymunedol y DU

