



TKB

What People Told Us
Report of Consultation
Wave1

**Community Connections
Project**
Towyn and Kinmel Bay



UK Government Wales
Llywodraeth y DU Cymru



Contents

1. Purpose	1
2. Consultation Opportunities	2
3. Postcards from Infant/Primary School	4
4. Community Consultation Event – 1st to 2nd April and Through Postbox	21
5. Create Communities Digital Mapping Tool	31
6. Summary	46

1. Purpose

The purpose of this document is to report on the consultation held as part of the Community Connections project for Towyn and Kinmel Bay in the County Borough of Conwy.

The project is funded by UK Government through its Community Renewal Fund and by Towyn and Kinmel Bay Town Council.

Image 1 – Promotional Poster for Community Consultation Event



Source: Chris Jones Regeneration

2. Consultation Opportunities

The following opportunities were made available to the local community and visitors.

Face to Face

Local Schools

The Community Connector attended the infants and primary school to talk to pupils about where they live, what they and dislike and ideas for improving the place. Postcards were handed out and completed by the pupils, some with the support of teaching staff.

A total of 234 postcards were completed by the primary school pupils.

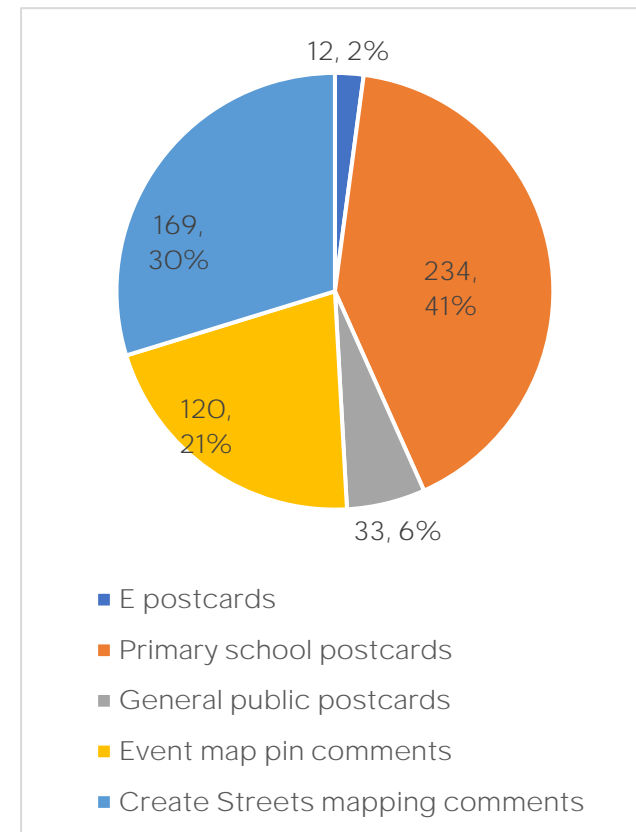
Community Roadshow

On the 1st and 2nd April, a roaming community roadshow was organised across Towyn and Kinmel Bay with a presence at the following venues and places:

- 1st April - 10am to 1pm – St Mary’s Church, Towyn
- 1st April – 2pm to 5pm – Outside library and resource centre, Kinmel Bay
- 2nd April – 8am to 1pm – Tir Prince Market
- 2nd April – 2pm to 5pm – Kinmel Bay Beach car park

80 people directly engaged across the four locations. 120 comments were made using a large physical map of the area and the use of simple issues and ideas flags.

Figure 1 - Breakdown of Responses by Method



Source: Various

Written

In addition to those postcards handed in during the 1st and 2nd April community consultation event, additional cards have been handed in to the Town Council and through other community outlets.

33 postcards were either handed in during the event or received through the Town Council and other community hubs.

Image 2 - TKB Postcard - Printed and Digital Version



Tell us what you love about TKB

How can we make it better?

Please complete this postcard and drop it in the box at any TKBVOICE information point or at the Community Resource Centre, The Square, Off Foryd Road, Kinnel Bay, LL18 5BT

Name _____

Email _____

Phone _____

Post Code _____

Resident Yes No

Visitor Yes No

By sharing my contact details with TKBVOICE, I agree to be contacted & for my details to be used to keep me updated on TKBVOICE & other Town Council News. I understand that I can unsubscribe at any time by emailing info@tkbvoice.wales



UK Government Wales
Llywodraeth y DU Cymru

Digital

From the 1st of April until the 25th of April, the local community could also comment online through the TKBVoice website. This specifically involved the use of a simple E-postcard and the use of the Create Communities Digital Mapping Tool. 12 comments were received using the E-postcard facility. 169 comments were made using the Create Communities Digital Mapping Tool.

3. Postcards from Infant/Primary School

The following comments were made by made by pupils at Ysgol Maes Owen and Ysgol Y Fforyd.

What You Love About TKB	How Can We Make It Better
Beach Coast Sea Rugby clubs Football clubs	Pool Zipline Skate Park
Shops	Stop litter
Shops Sea	Pool
Football Basketball	More dog bins
Parks Sea Beach	Better parks Zipline
Beach Wildlife Friends Woodland	Stop the littering
Friends Parks Football	Better roads Traffic management More kids football
Sea School Family	More bins More parks Improve roads
Football clubs	More bins

Parks	More dog bins
Parks Football club Coast	Basketball courts More bins More dog bins
The beach	Pool
	Pool
Parks Beaches	Skate parks Pool
School Friends Home	More bins More dog bins
Shops Friends Woodlands Football clubs	More bins More dog bins
Friends	Pool
Sea Friends School	Pool Traffic management
Sea	Pool
Shops Home Beach Friends School Wildlife	
Football clubs	More parks
Swimming	Pool
Beach	More shops

Beach	Games at the arcade
	More hospitals More drive throughs
Fair	Do not park signs
Home People	Traffic Less roadworks
Home	More schools
Fair	Better fair rides
Sights of ocean and mountains	Less roadworks
Beach Park Arcades Market	Less litter
People	Less roadworks
Peaceful Calm Beautiful ocean	More buses Keep place clean
Beach Parks	Less litter More parks
Fair	Waterpark
Calm Sports centre	Less litter More fair
Beach Park School Fair	The Roads Litter Bigger park
Shops	More benches
Sea Train	More parks Less litter

Arcades Neighbours	Less roadworks
Park Market Fair Lake Beach Arcades Shops	Cleaner More shops Less roadworks
School	Letting us not do school work
Beach	No litter
Sports	Traffic
School	
Fair	More fair rides
Changing the world and reduce pollution	Help the world
Beach Home	Picking up litter from the sea
Beach	Pick litter up
Fair	
Beach Home Beautiful	Less litter on the beach
Park (Chester Avenue)	More people at Park
Fair	Buses on time for school
Don't like it	School
Asda Rocket Park Home	Park
Town	More parks

Beach Park	More parks Less litter
Park Fair	More parks Less litter
Beach Park	Less litter
Beach Park	More parks More fairs
Woodland Park	Craft centre More bins
Beach Park	More parks Less litter
Market School	The roads Bigger Park
Beach Park	Roads Litter Beach Bigger Park
Beach Park	Roads Litter on the beach
	Litter on the beach
Beach School	The traffic lights
Beach School	The roads Bigger Park
Beach Park	Bigger Park Beach
Beach Park	The litter on the beach

Like blue bridge	More flowers
Beach Park School Fair	Roads Litter on the beach Bigger Park
Park	More at the beach
Beach	Bigger Park
Family Ice cream	More dancing Pool Matalan Theme Park
	Pool Museum
	Zoo Pool
	Zoo School Park
	Zoo Theme Park
Like it	Grow our community
	School
Beach Park	More parks Less litter
	Pool Fix potholes School Fun fair
	Pool

	Pool School
	Zoo
	Pool
Beach Park School Home	Fix potholes Litter pick
	Pool Park Zoo
	Zoo
	Pool Local parks Growing areas Zoo
	More fun fairs More shops
The Beach	Litter pick
	Pool
	Fix potholes More local parks
	School More local parks Fix potholes
Asda Shops Home People	Traffic Litter More shops School

Beach	
Arcades People Home	Less roadworks Traffic
Beach Football clubs Asda	Traffic
	Less litter
Sport centre Park Beach River	Litter Use electric car Use of plastic
	Beach
Park Woods	Zoo Hotel
Swim Beach	
Park	Litter
Beach Pools	Less litter More paths
Beach Restaurants	More parks Less litter
Park	
School Fairs	More bins More fairs
Football clubs Schools Shops	Pool More dog bins Roads
Friends	More toy stores

Family	More pedelos
Seaside	
Fair	Litter
TKB Voice	Trampolines Pool
Fair	Less litter
Parks Swimming lessons School	Cleaner Park
Parks Swimming lessons School	Less litter Cleaner environment
Arcades	
Home People	Make it bigger
Beach Pond	More football Trees More fun fair
School	Roads
Beach	Litter on the beach
Sandy Cove School Park	Litter on the beach Bigger Park
	Roads
Beach Fair	Roads Bigger Park
School grounds	Roads Bigger Park
School	

Beach Park School Fair	Roads Litter Bigger Park
School	Litter on the beach
Beach Park Circus	Bigger parks Better football
Park Sandy Cove Club The Arcade	Bigger parks Less litter
Fair	
Beach	Litter
Beach Shops	No pet shops
Fair Park	Park
Beach Fair Park	Zoo Fair Donut shop
Park	More seating
Beach	More parks
Asda Beach Fair Home	Zoo Dunkin donut Starbucks McDonalds
Beach	Clean the beach
Knightlys Asda	Clean the beach

Beach Park Walking paths	More food places
Beach Fair	More people
School Park	
Park	Clean the streets
Beach	Parks
Peaceful	Litter
Beach	Lifeguards
Beach	
Beach	
Fair	Add more places
Friendly	Make Owain Glyndwr Goals better
Fair	Less litter
Arcade Beach Cinema	More shops Swimming
	Less litter Less environment
	Nothing
Nice	
Seaside Beach	A sandy beach
Clean	Make roads safer
Beach	More dog bins
School Friends	More street lamps More traffic wardens

	More helpers
	Less litter
Helping the community	
Fair	Less litter
Fair	Cleaner beaches
Seaside	
Arcades	More flowers
Asda Donuts	More parks
Fun fair	Bigger Park
Rhyl BMX track	
Arcades	More slides
Beach	No dog poop
Fun Fair	More things at the park
Fun fair – caterpillar ride	Bring back the caterpillar
Park	Do more things at the park
I like how our school looks	A bigger slide in the park
Donuts	
Fun fair Arcade	Open the funfair all of the time
Arcade	I'd like 10 arcades
Everything	Football pitch
Arcade	More places to eat
Beach	More beaches
Shops	More arcades
Fun fair	More arcades
Fun fair	More fairs
The Park	More skate parks
Beach	Make more of the sea

Fun Fair	A trampoline park
Fun fair Park Beach	Water ride at fun fair
Shops	Have more toys
Shops	More fun
Houses	Give more money to poor people
Fun fair	Add another fun fair
Like flowers	Games
Fun fair	A bigger fair
The pub	More pubs
Park	A water park
Beach	A swimming pool
Park	More fields
	A water park
Park	A water park
Fair	New fair
Fair	New fair
Beach	Park
	A water park
Park	A water park
Park	A water park
Asda Donuts	More parks
Beach	Swimming pool
The sea	Litter
Fun fair	More ice cream flavours
Car boot sale	Free parking
The park	More places to play with my friends

Beach	Somewhere like Geronimo's
Fun fair	Too many rocks on the beach
Beach	More places to eat out
Fun fair	
Beach	Statues of children
Funfair	More shops
Parks	More slides
Fair	New houses
Beach	Bigger Park
Shops	Swimming pool
School	Bigger Park
Flowers	More shops
Park	More arcades

Focus/Priorities

Image 3 and Image 4 are word clouds of words provided when asked what they like and dislike/things to improve in Towyn and Kinmel Bay.

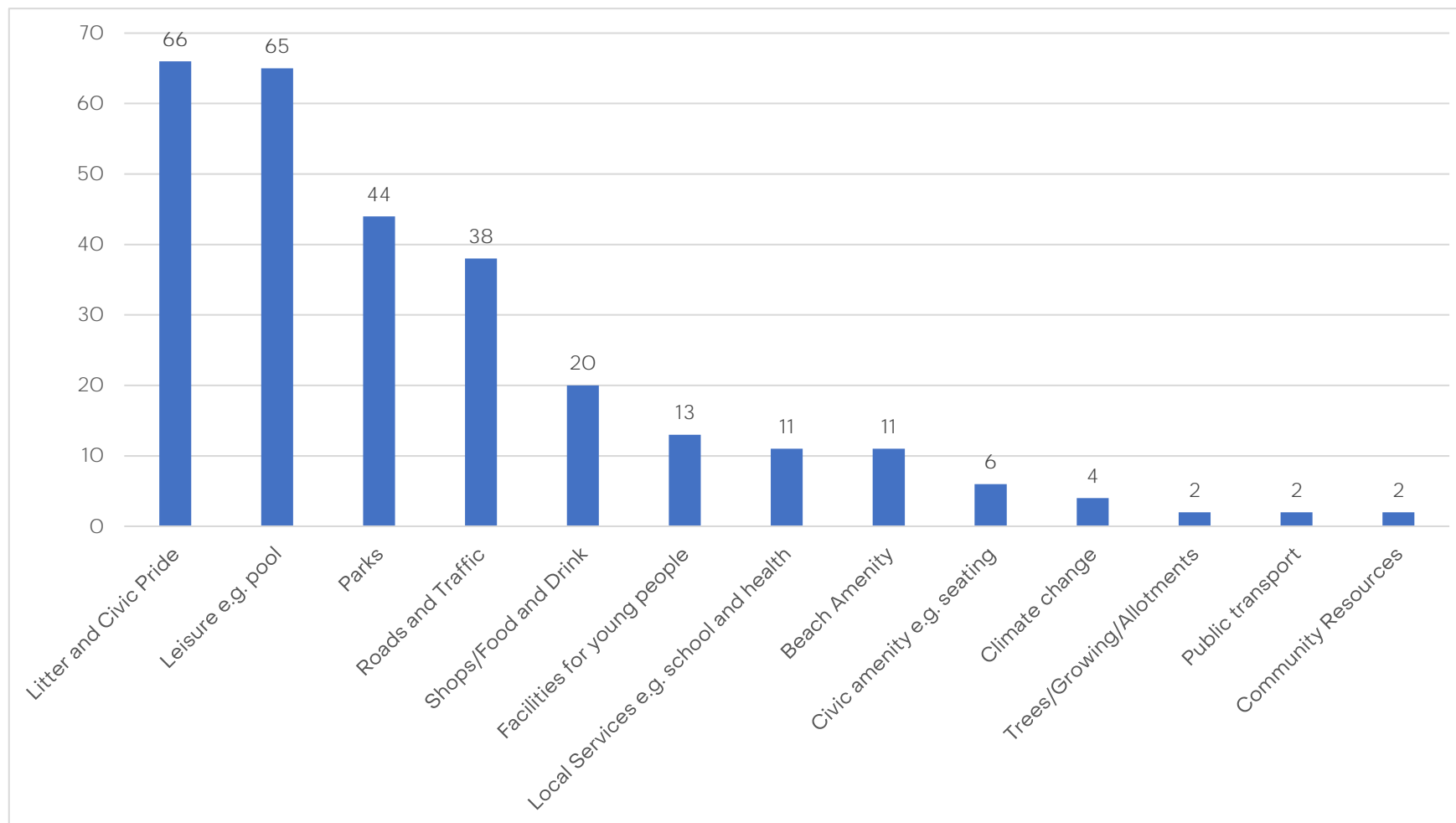
Image 3 - What do school children like about TKB?



Source: Individual Postcard Analysis – Infant/Primary Schools

Figure 2 shows analysis of comments from local pupils on where focus should be in terms of improvements.

Figure 2 - Frequency of Themed Issue



Source: Individual Postcard Analysis – Infant/Primary Schools

4. Community Consultation Event – 1st to 2nd April and Through Postbox

Image 5 - Photos from Community Consultation Event



Source: Various

The following comments were made by made by members of the public through the use of handwritten postcards or through electronic postcards through the TKBVoice website.

What You Love About TKB	How Can We Make It Better
Best play park for miles Beach Daffodils on St Asaph Avenue Skate Park	Signs – “do not feed the gulls” Dog poo bins on the bridge, path side of St Asaph Avenue A bin the play park – library end
Two distinct communities	Signage – welcome to Kinmel Bay and Towyn
Pleasant location Coastal walks Semi-rural	Make use of footpath and local history Interpret track bed of Rhyl to Denbigh line – Kinmel camp and Great War connections
Local amenities A pleasant place	Litter problems Improve the fencing over the bridge Widen and extend path through Clwyd Park Volume of traffic on St Asaph Avenue
Socialising Walking Gardening Football Cricket Listening to music	
In all of the 10 years, there has never been a dull moment	A high level indoor gym
Great place to live	Roads and traffic Sandy Cove roads
The library Friendly people Course at library is ace	Walks and modern sculpture trail for families
Friendly community centre	Dog poo on common

The community library	A New Town Council
The chance to make suggestion	More bins on beach front
Clean and tidy	Restrict large vehicles on St Asaph Avenue
By the beach Easy access Quiet and peaceful	Seagulls
People Beach Beach cafes	Sandy Cove Yellow boxes on Fforyd road in cove
Easy going Friendly Walk on prom	Evenings out – food and drink offer poor
	Morfa Leisure More social places Youth provision
Communities Friendly Amenity Good bus services	Happy
Peace and quiet Car boot and markets	
Very friendly	Somewhere for the homeless
Beautiful countryside Beaches People are friendly Flower planters on main roads and side streets	Fly-tipping Better choice of local shops Need a chemist Dog mess
The efforts of TKB	Mums, dads and tots

Events Carol singing	Toddler sessions in Towyn
Nice flat walks The prom Public transport Nice cafes/eateries Lovely beaches	Yellow boxes on entrance to sandy cove Roads on sandy cove More bins on prom
	Need a crossing where grange and shops next to bus stop
Beautiful Beach Climate Pace	Visitor congestion Career opportunities Flood prevention Environment better
Climate The shoreline	Resident priorities ahead of 50,000 visitors and abuse of community benefit and services opportunity
Community spirits	Greener living
Love it	
St Mary's Church The Community	Fewer caravans Better roads and pavements More disabled parking
I love it all – socially and the environment	Swimming pool Free swimming for pensioners
Friendly	Park and ride system for markets and community
Beaches	Change to deeds on the Owain Glyndwr estate. The deeds state you cannot park a touring caravan on your personal drive. The estate was built 20 years ago can we

	change this as neighbouring estates can store their touring caravans on their drives.
Fresh air, and healthy environment - love the Hub Cafe, and the holiday atmosphere; accessibility to essential/recreational services/amenities (I am a Belgrano resident, formerly lived in Kinmel Bay) collection of essential services in 2-3 mile radius – garden centre, Asda, doctor's surgery, pharmacy Car washed, Churchgoing at St Marys. Most of these services are in Belgrano where we live	Making sure in planning those essential services are grown to meet the need - e.g., health and leisure for example impact of holiday market when you feel the change in the season -April to September - e.g., pressure on services North Wales Lagoon development - opportunities if structured well for Towyn and Kinmel Bay with some opportunities for visitor/leisure economy
Knowing that residents are gathering to make our little community better	We need more bins on prom from harbour to pensarn we need lighting on prom I walk along the prom 7 days a week and it's changed in last 8 years there is a lot more litter also graffiti which I have reported .I have noticed more fly tipping which happened when we first opened up if we could get caravan sites to assist with keeping prom clean I think that would help also the fair that seems to be an area where people gather for boozy nights bottles and debris left on wall and broken bottles thrown along prom sorry this is so long
Informative Passionate and have a great desire to improve local communities for all to enjoy and get involved with.	Asking the local community what they would like is a fantastic way of getting this question asked I myself think more communal gardens, play areas park and ride.
I love the beach and walk my dogs there every day. There are plenty of shops close by. There are also lots of activities	We need some signs on the coastal path to remind everyone to be kind to other users. Cyclists ride far too fast

<p>for everyone to take part in, although I don't at the moment, as I am a carer for my husband. I love the views from the beach.</p>	<p>for the conditions, i.e., families walking with small children and of course dog walkers. We need a bin at the end of the path leading into Southlands Road to encourage people to keep the path clear of rubbish and dog poo. I litter pick myself while walking my dogs, but I don't go on the group ones, as I cannot commit to the times and dates, I do this on the beach and coastal path between the harbour and Roland Road pathway, because I like to see the results and help the environment. Unfortunately, the new bins Conwy council have installed cannot accommodate the rubbish, so I have to use the bins as the harbour.</p>
<p>Lovely people, the beaches, being able to walk miles on the flat</p>	<p>Dog owners to pick their dog mess up! 🐕</p>
<p>the wind farm, good place to cycle, good for walks, beautiful grasses and sand, great views, funfair for rainy days, nice park, good cafes, friendly people, boat yard</p>	<p>Clean up the litter on the coastal path More public toilets</p>
<p>Having a holiday vibe all year round. Excellent walking and cycling routes. Great accessible primary schools with transport links to local high schools. Great for families</p>	<p>Some improved amenities on the prom, better beach access in Towyn. CCTV to deter ASB. Getting business interest on Tir Llwyd.</p>

<p>The library park is the best for miles, but you took the bin out from the library side during covid & never replaced it. Please can one be put back there. Also, the matting under the monkey bars has deteriorated. Please can you put the spongy matting under it like the rest of the park, lots & lots of badly cut knees here. Lovely Park though & very well maintained.</p>	<p>Signs up to stop feeding the gulls. I was dive bombed on Towyn crossroads last year & my head was bleeding. A couple of weeks later my husband was dive bombed in Elwy circle, again his head was dripping with blood. I became really anxious after & perhaps noticed more how often the gulls are divebombing. Residents are feeding them. They just think they're being kind.</p>
<p>The quietness, the always changing mix of people. How our town council has gone progressive and asking for opinions then dealing with problems.</p>	<p>The footpaths all over TKB need some kind of repair. Also, on the Chester Avenue Estate there is hardly any drop kerbs. This is keeping people in their homes both elderly and young mums. Could you look into this please?</p>
<p>The community spirit of the people of Towyn and Kinmel Bay.</p>	<p>A bus lane through Towyn and Kinmel Bay will help the congestion of traffic, also it will help keep the buses being on time and hopefully more people will choose to travel by bus if they are arriving at their destination quicker, reducing less cars on the road and reducing carbon emissions, improving people's health.</p>
<p>The community spirit of the people of Towyn and Kinmel Bay.</p>	<p>A bus lane through Towyn and Kinmel Bay will help the congestion of traffic, also it will help keep the buses being on time and hopefully more people will choose to travel by bus if they are arriving at there destination quicker, reducing less cars on the road and reducing carbon emissions, improving people's health.</p>
<p>The quietness, the always changing mix of people. How our town council has gone progressive and asking for opinions then dealing with problems.</p>	<p>The footpaths all over TKB need some kind of repair. Also on the Chester Avenue Estate there is hardly any drop</p>

	kerbs. This us keeping people in there homes both elderly and young mums. Could you look into this please
The library park is the best for miles but you took the bin out from the library side during covid & never replaced it. Please can one be put back there. Also the matting under the monkey bars has deteriorated. Please can you put the spongy matting under it like the rest of the park, lots & lots of badly cut knees here. Lovely park though & very well maintained.	Signs up to stop feeding the gulls. I was dive bombed on Towyn crossroads last year & my head was bleeding. A couple of weeks later my husband was dive bombed in Elwy circle, again his head was dripping with blood. I became really anxious after & perhaps noticed more how often the gulls are divebombing. Residents are feeding them. They just think they're being kind.
Great place to live - everything on doorstep, and can enjoy the holiday vibe.	Some improved amenity on the prom, better beach access in Towyn. CCTV to deter ASB. Getting business interest on Tir Llwyd.
Having a holiday vibe all year round. Excellent walking and cycling routes. Great accessible primary schools with transport links to local high schools. Great for families	Improved amenity at Kinmel bay beach. Better prom access from sandbank road and areas in Towyn. CCTV to deter ASB
the wind farm, good place to cycle, good for walks, beautiful grasses and sand, great views, funfair for rainy days, nice park, good cafes, friendly people, boat yard	Clean up the litter on the coastal path More public toilets
Lovely people, the beaches,being able to walk miles on the flat	Dog owners to pick their dog mess up! 🐕
I love the beach and walk my dogs there every day. There are plenty of shops close by. There are also lots of activities for everyone to take part in, although I don't at the moment, as I am a carer for my husband. I love the views from the beach.	We need some signs on the coastal path to remind everyone to be kind to other users. Cyclists ride far to fast for the conditions, ie families walking with small children and of course dog walkers. We need a bin at the end of the path leading into Southlands Road to encourage people to keep the path clear of rubbish and dog poo.I litter pick

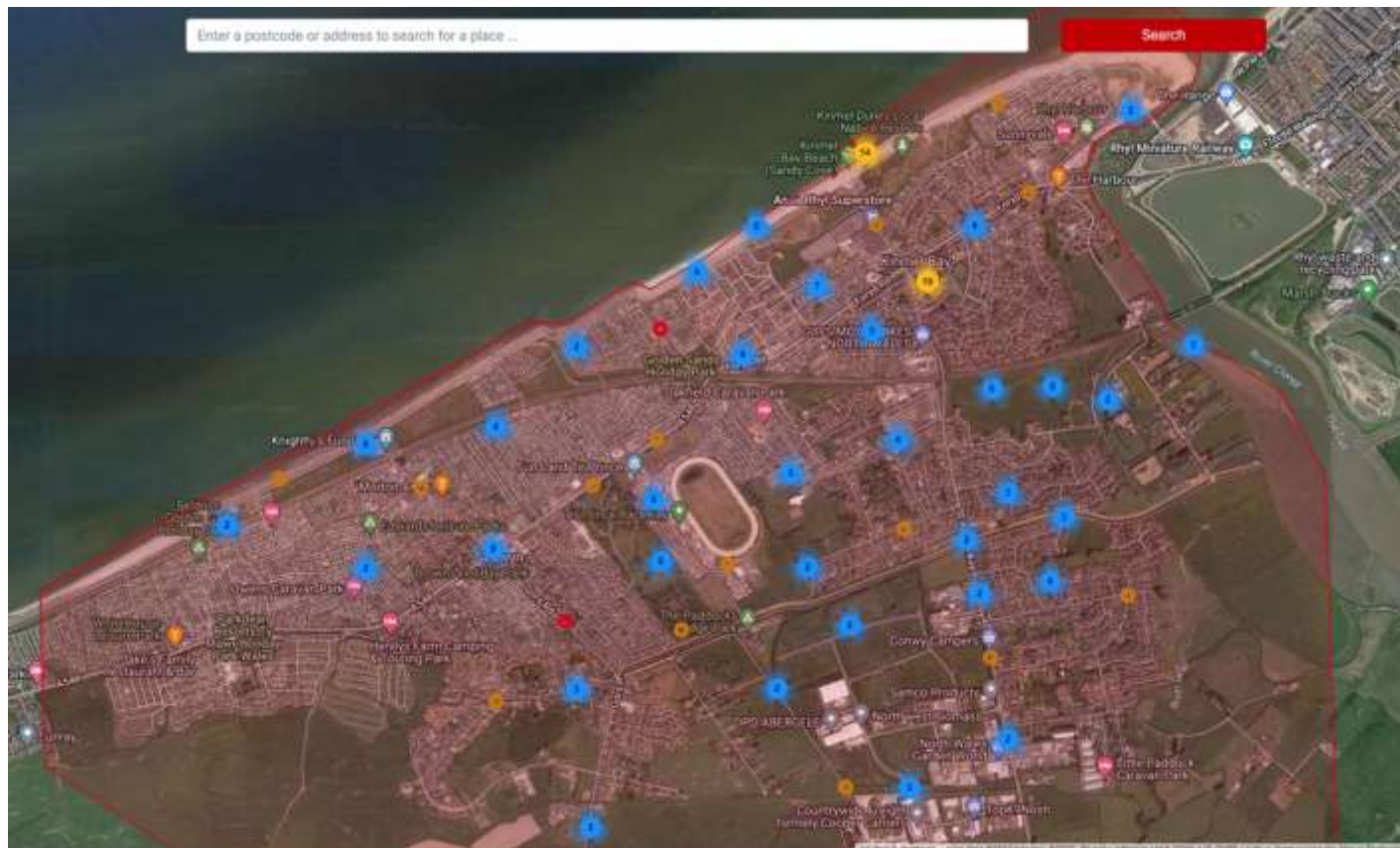
	<p>myself while walking my dogs, but I don't go on the group ones, as I cannot commit to the times and dates, I do this on the beach and coastal path between the harbour and Roland Road pathway, because I like to see the results and help the environment. Unfortunately, the new bins Conwy council have installed cannot accommodate the rubbish so I have to use the bins as the harbour</p>
<p>Informative, passionate and have a great desire to improve local communities for all to enjoy and get involved with.</p>	<p>Asking the local community what they would like is a fantastic way of getting this question asked I myself think more communal gardens, play areas, park and ride.</p>
<p>Asking the local community what they would like is a fantastic way of getting this question asked I myself think more communal gardens, play areas, park and ride .</p>	<p>We need more bins on prom from harbour to pensarn we need lighting on prom I walk along the prom 7 days a week and it's changed in last 8 years there is a lot more litter also graffiti which I have reported .I have noticed more fly tipping which happened when we first opened up if we could get caravan sites to assist with keeping prom clean I think that would help also the fair that seems to be an area where people gather for boozy nights bottles and debris left on wall and broken bottles thrown along prom sorry this is so long</p>
<p>Fresh air, and healthy environment - love the Hub cafe, and the holiday atmosphere; accessibility to essential/recreational services/amenities (I am a Belgrano resident, formerly lived in Kinmel Bay) collection of essential services in 2-3 mile radius - garden centre, Asda, doctor's surgery, pharmacy Car washed, Churchgoing at St Marys.. Most of these services are in Belgrano where we live</p>	<p>Making sure in planning those essential services are grown to meet the need - e.g. health and leisure For example impact of holiday market when you feel the change in the season -April to September - e.g pressure on services North Wales Lagoon development - opportunities if structured well for Towyn and Kinmel Bay with some opportunities for visitor/leisure economy</p>

The beaches	Change to deeds on the Owain Glyndwr estate. The deeds state you cannot park a touring caravan on your personal drive. The estate was built 20 years ago can we change this as neighbouring estates can store their touring caravans on their drives.
Love the area, love living by the sea, hate the ways its become so "tatty" looking. Almost everything we needs is in the area, its needs more improvement.	<p>Better health service (GP)</p> <p>Clean up pavements</p> <p>Provide more dog litter bins – fine owners for allowing dogs to foul</p> <p>Generally, tidy up and make pretty</p>

5. Create Communities Digital Mapping Tool

Image 6, Image 7 and Image 8 are screenshots of the Create Communities Mapping Tool which shows the distribution of comments and also the type of comments with green for things people link, red for dislikes and amber for things to improve.

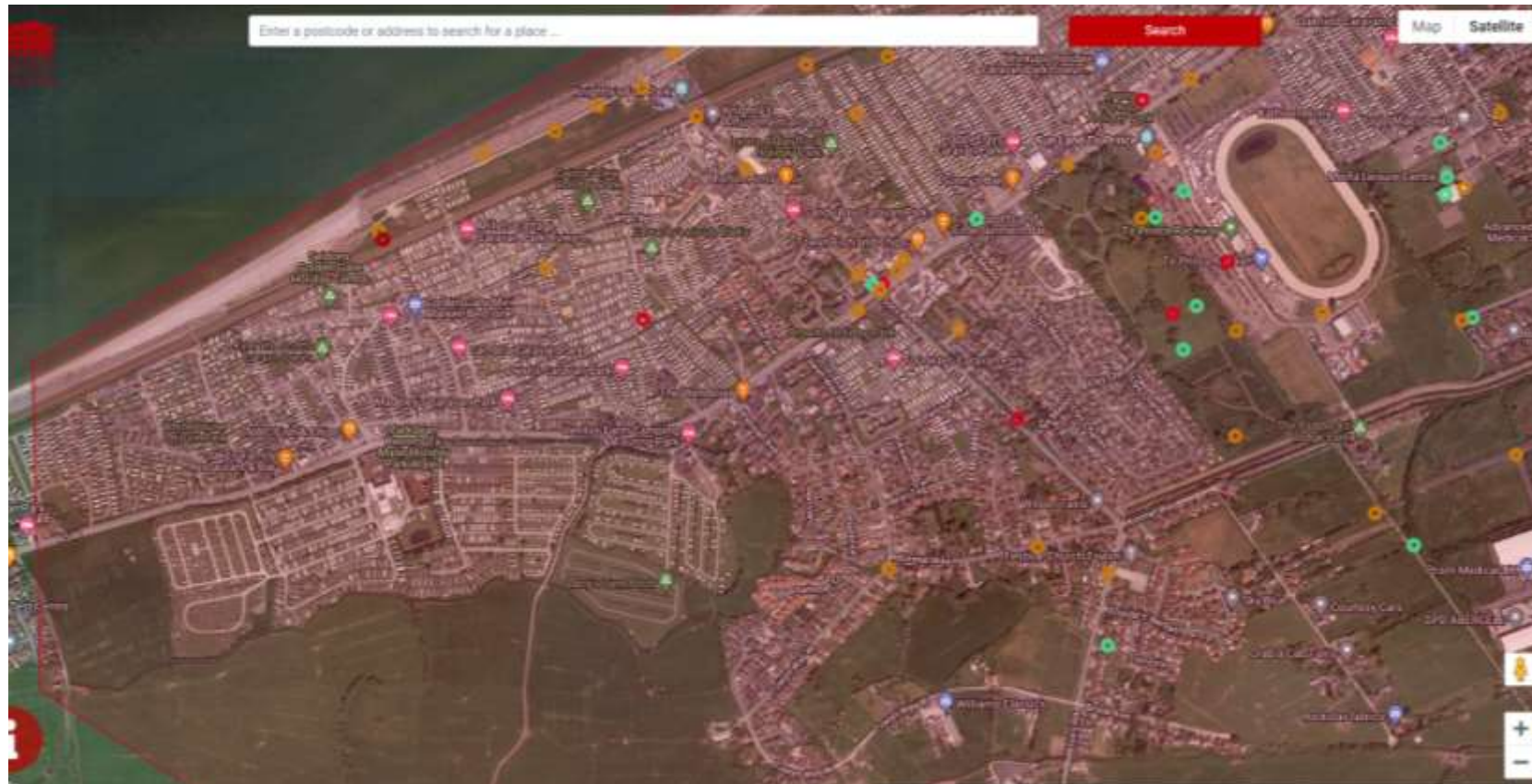
Image 6 - Create Communities Digital Mapping Tool – Whole Community



Source: TKB Voice, Create Streets ©

Towyn

Image 7 - Create Communities Map - Distribution of Comments Across Towyn



Source: TKB Voice, Create Streets ©

Kinmel Bay

Image 8 - Create Communities Map - Distribution of Comments Across Kinmel Bay (Partial)



Source: TKB Voice, Create Streets ©

Likes

- This is a lovely area to get a coffee, go for a walk or sit and chat. Very nicely developed.
- The little shop units are great. Attracts tourists and locals to the area to buy sweets souvenirs and gifts etc, people say they don't like them, but they are a livelihood to the people who occupy them. However, the area needs help improving with lighting and refuse bins and litter pickers etc... all the council say that it is private land! That shouldn't be an excuse to ignore it, the whole community of Towyn including the local council should take more of an interest in improving everywhere not just no private land areas. If TKB are a voice of everyone then they should look into improving every part of Towyn & Kinmel Bay.
- Pleasantly anonymous
- I was caught in two minds on whether to place this under "needs improving" but I really do like the trees that make this an avenue although a few more trees to fill the gaps wouldn't go amiss.
- We are lucky to have Y Morfa, funded by lottery and community following the Towyn Floods of 1990, now the largest single community engagement and home to Kinmel Bay Football Club and many local user groups, manned by community volunteers.
- Parc Hanes is a large area of open space located between residential areas yet fenced off from residents. A plan is now evolving to convert this area to woodland, wetland and community engagement natural space; active travel and planting as well as an active travel hub.
- Putting slow signs at the beginning of the close
- More dog bins
- Baysville is a lovely especially in the summer. Friendly staff and amazing, unspoiled views of our stunning beach and sunsets
- Quiet but close enough to main roads and shops.
- Fantastic open space park.
- Nice walk - could be used as part of a Kinmel Bay / Towyn circuit walk.
- Y Morfa is the most engaged community resources and run entirely by volunteers, it needs further investment to cater for the growing needs of the community
- It needs a council bin in this area outside the premier, there just isn't enough in the area when the influx of tourists come.
- The new active travel route through Tir Prince will link places in our whole community. More trees would add to the natural intention.

- Opportunities arising from Parc Hanes includes active travel linking along the Doll canal, any bridge needs to be carefully considered so as not to create a rat-run between the residential areas.
- A road connection to Towyn would need to be discussed, previous discussions reveal residents don't want another rat run.
- Gors road could be further improved if parking in verges past the church to the river were put in place it's another traffic flow stalker when it happens
- I love the calmness I came here on holiday over 12 years ago I felt calmness and never dreamed I would one day live here
- Good library
- Cherish our schools - create better links
- Tir Prince Market is a big draw
- There is a good regular bus service - no. 12 is very frequent :)

Dislikes

- The roads need sorting
- Denial of community benefit as intended in yhdd we gift and the lease
- Facilities such as this have taken over our community. Creating no go zones and containing the visitors they accommodate. A risk for service providers, traffic control, biodiversity and flood risk -risks.
- This road is too narrow and very dangerous. It desperately needs improvement before someone is killed. Always see cars on their roof in the fields or in the ditches.
- Following the recent excellent improvement to Tir Prince Park with the addition of the new Cycle/footpath under the "Active Travel" initiative it is a real shame that the cycle/footpaths through Tir Llwyd are being abused by inconsiderate parking making "active travel" on these paths almost impossible.
- On Gors Road it should be made into a one way road to prevent accidents or at least have a sign saying no caravans allowed.
- our promenade is congested with walkers, dog walkers and cyclists, this makes it a dangerous place during the season with many incidents happening. It is also too narrow for emergency vehicles to access which resulted in one poor lady having to be transported via the Lifeboat to a waiting ambulance in the harbour after a fall. The promenade needs widening to allow separate lanes for pedestrians and cyclists

- Area of business park not used is a clear waste of land, but it is also being left to ruin. Not helped by dog walkers as it is covered in poo.
- The price of parking going up will lead to more people searching for free parking in the local community as residents, we have to deal with enough problems with traffic etc in the summer season due to poor infrastructure. Surely the council could give a little back to the community by providing parking and easing the stresses on the local community. I'm sure the council could cover this.
- This road is becoming a nightmare, some sort of speed enforcement is required. It also is a magnet for fly tipping.
- Too many caravans in TKB, putting pressure on services
- Traffic!
- Unadopted roads
- Litter
- Concrete shelters are an eyesore
- More police evening time
- Too many mini roundabouts
- There is a real lack of community in TKB
- Lack of signage or a trail

What Needs Improving

Infrastructure	Beach/Coast	Health and Well-being
<ul style="list-style-type: none"> ▪ Sort the roads out on Sandy cove. ▪ Improve the quality of the road surface ▪ Sort the rainwater drains so water does run away, re surface the roads & make user friendly for all ▪ TKB is a community at flood risk, coastal and river defences are inadequate and so render our community unable to increase residential development. If we had flood protection to at least the Wales Gov recommended TAN15 defended zone standard, then we could see inward investment to our enterprise park, the creation of some added value career jobs, some increase in resident numbers, development of our community, improvement in opportunity for future generations. ▪ The Clwyd west embankment needs to be improved so it is an active travel path and an effective flood barrier. ▪ We need adaptive and affordable bungalows in TKB ▪ Improved flood defences for coast and river to the new TAN15 "Defended Zone standard". 	<ul style="list-style-type: none"> ▪ Needs improved access to promenade ▪ I think it is to maintain the coastal paths and parks ▪ Need a reason to stop ▪ Widen Kinmel Bay Promenade to make it safer. ▪ reintroduce the groynes on the beach to capture the sand and sediment. ▪ better and more beach access points ▪ shower and foot shower ▪ The priority for the prom is flood resilience; it also needs lighting and to be a safer place to walk. ▪ more Bins on the prom from golden sands up to Pensarn not plastic bags on rails for seagulls to rip open ▪ I would like to be able to get onto the beach without risking a broken hip on the pebbles ▪ I'd like to see less rubbish being left on beach and sidewalks we need more bins we also need dog wardens for the poo 	<ul style="list-style-type: none"> ▪ Local council run gym maybe. ▪ The charity that has the lease for this field also "owns" a number of unmade roads in TKB, there needs to be a plan for improving the field and the roads. ▪ Keep park maintained, update equip, and maybe new sports equip ▪ The era draft plans for an Y Morfa extension and these should be discussed in place planning to arrive at an expanded local facility to continue the great work

Young People	Green Infrastructure	Civic Pride
<ul style="list-style-type: none"> ▪ Towyn & Kinmel Bay would benefit from a Youth Service for the young people ▪ I would like to see a skate park in Kinmel bay similar to the one in Rhyl. ▪ More things for children to do. For example, a small Astro turf area in local parks for playing hockey or tennis ▪ I read someone suggest something to help teenagers in the area. A youth club, or a teenage council for them to give their ideas. Something to give back to the children of the area. 	<ul style="list-style-type: none"> ▪ More community gardens, self-grow veg and fruit for all community to share ▪ Beehives on Parc Hanes ▪ Parc Hanes could contain some local cultivation (allotments) which would be of interest to residents with small gardens. Other allotment areas could be created in St Asaph Avenue sorts filed and Tir Prince park or raceway. 	<ul style="list-style-type: none"> ▪ A bin ▪ Bins emptied frequently in the summer months as when there are holidaymakers here, they are often overflowing. ▪ Cleaner streets ▪ Keep the estate clean - could be used for cycling circuit for kid's learners or maybe turned into a cycle club like Rhyl dirt track. ▪ More proactive involvement from council regarding the above. They clear excrement if you report it, but there needs to be a better deterrent. Maybe leafletting all properties with photographs showing how disgusting and unsanitary it is and asking that dog owners please pick up, even if on grassed areas. Empty threats of fines don't work because there is no policing. I'd be happy to spray all the yuck I encounter daily on my dog walks if the council can supply a suitable safe biodegradable paint. At least that would help people to avoid stepping in the stuff. ▪ Cartrefi Conwy could be maintaining the estate to a higher standard, grass is cut and left to be walked in; broken

		fence to the canal is a danger, litter builds up across the estate.
Shops, Services & Food and Drink	Movement & Transport	Community Safety
<ul style="list-style-type: none"> ▪ A nice bistro or restaurant which would appeal to locals as well as holiday makers so that we residents wouldn't have to travel elsewhere for an evening out. ▪ Would love to see a Rossini's (Italian) in TKB ▪ improvements in the hospitality offering. ▪ Agree that need to improve hospitality offering 	<ul style="list-style-type: none"> ▪ Zebra crossing especially for children making their way to school or bus stop on St Asaph Ave. The only crossing is at the top of Cader Avenue, and I feel one is also need further down by Kinmel Bay Church. ▪ Parking at school/introduction of walking busses/other traffic calming schemes & patrols ▪ A decent taxi service, taxi at present not working on Sunday, not good for local businesses ▪ A bus going to Glan Clwyd Hospital picking up in Towyn and Kinmel Bay running to a regular timetable as the parking at the hospital is non-existent. ▪ Speed checks ▪ Many roads are unmade and consequently difficult / impossible to navigate particularly for disabled residents. Other parts are also difficult for mobility scooters and buggies, access to our nicest places is denied to 	<ul style="list-style-type: none"> ▪ CCTV to discourage ASB ▪ Better lighting along the promenade and I would walk more in the evening, and I think others would too. ▪ Lighted pedestrian walkways and possibly some vehicles cut-throughs blocked at one end.

	<p>those who most need the access for well-being.</p> <ul style="list-style-type: none"> ▪ additional road links between Towyn & Kinmel Bay ▪ The active travel route is great but getting onto the route is difficult for disabled / mobility access. ▪ Road's fixing ▪ Disabled access is poor in TKB, the best places are not accessible on mobility scooters, there are few places for shelter or rest on active travel routes. ▪ Taxi service that serves the community ▪ Better safer parking for the school and reduce speeding on Cader Ave ▪ We need a town trail linked to history and health and well-being ▪ Access for all including disabled and all ages, off road and safe is important. ▪ unmade roads are spread across TKB and they need to be brought to adoption standard. The charity with responsibility for the roads is ineffective. ▪ Again, maintain such walks ▪ Better monitoring of this pathway between trem y ffair and trem elwy ▪ Main Foryd road is a nightmare in holiday season. Need to look at traffic control and signs for holiday traffic 	
--	---	--

	<ul style="list-style-type: none">▪ Glan Morfa should be for residents parking especially as we pay for garages. we get a lot of people parking during the holiday season. 3 times my garage has been blocked. we used to have signs up, but they disappeared. Also, we need a community skip in the area. Again, we used to have on regularly in Glan Morfa. might help with the fly tipping! Being disabled with mobility problems it might help having a couple of disabled bays?	
--	--	--

Strategic Planning	Sports and Recreation	Employment and Support
<ul style="list-style-type: none"> ▪ Cohesion a community plan that is coordinated, funded and managed always being flexible enough to accommodate change in community focus. ▪ Bring about a balance of opportunity and contained leisure. Job creation fair pay. pensionable, secure and developmental, sharing the profits within the community. Making us proud not resentful. ▪ Some rationalization is needed in terms of environment, services and opportunity. ▪ we need to direct money from the wind turbines into the community ▪ To open discussion on the over-dominating volume of visitors far outnumbering residents and absorbing services etc. (4) to deliver against the promise of a new combined school. 	<ul style="list-style-type: none"> ▪ Kinmel Bay Football Club is one of 12 in Wales 500 accredited to the highest Platinum standard based on the junior teams of girls and boys trained by excellent coaches. It would be good if a youth zone could be created to work with those young people who do not play sport. 	<ul style="list-style-type: none"> ▪ New small Businesses do not seem to last long in the area - could parking be improved in the square. ▪ a surestart programme for mothers ▪ To promote and present Tir Llwyd Enterprise Park suitable to attract added value jobs.

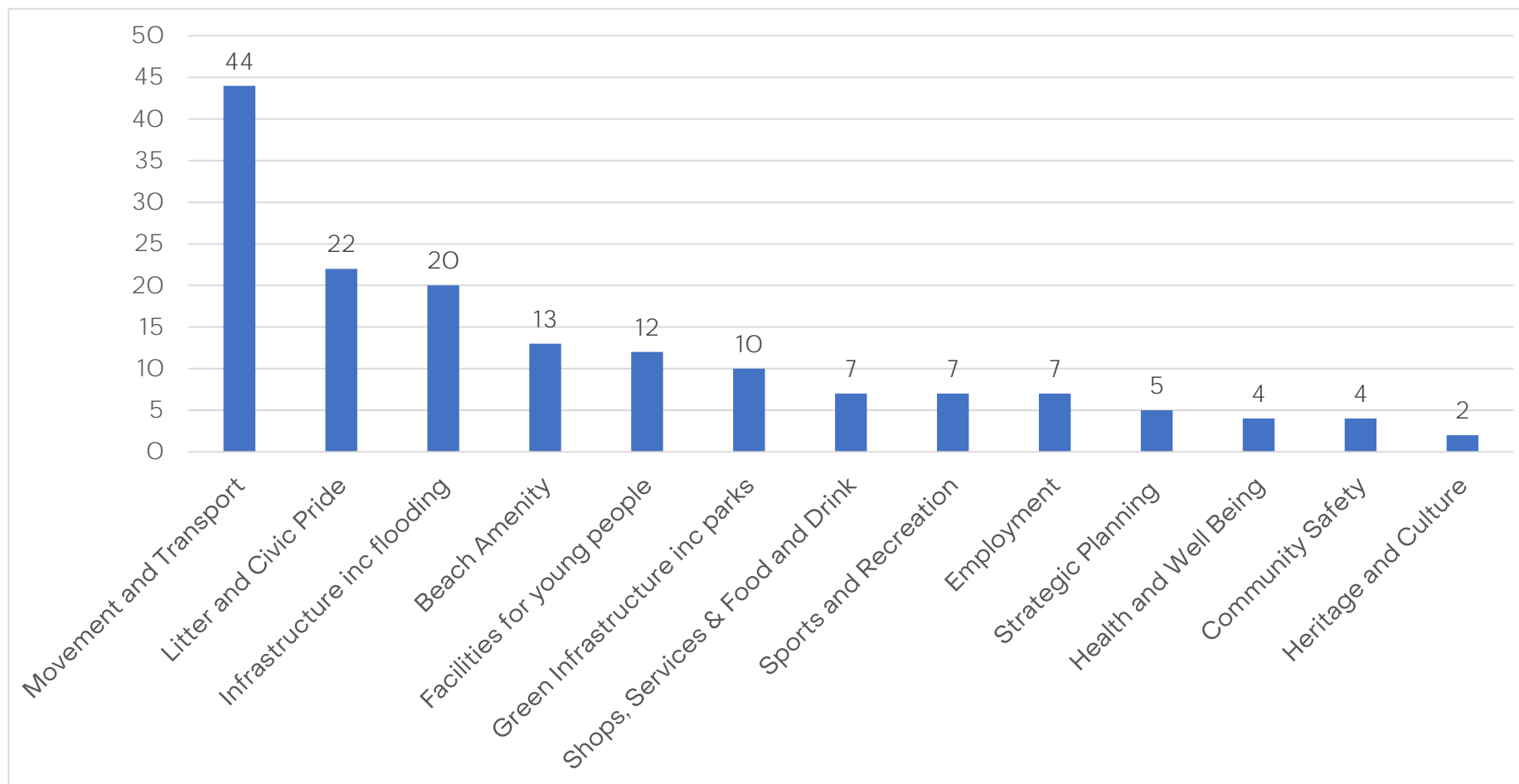
Image 10 - What does the local community dislike/needs improving about TKB



Source: Individual Postcard/Mapping Comments Analysis – Wider Community

Figure 3 shows analysis of comments from local pupils on where focus should be in terms of improvements.

Figure 3 – Frequency of Themed Issue

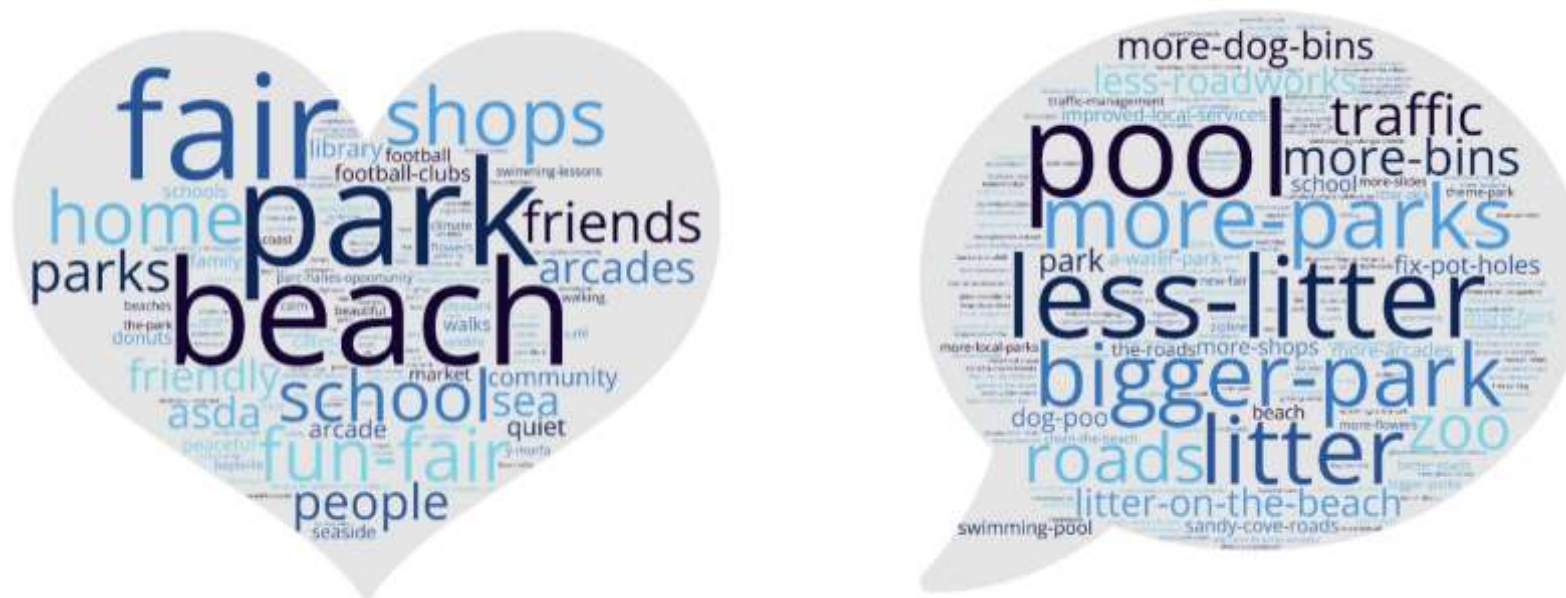


Source: Public Consultation Events/Postcards (written and electronic), Communities Mapping Tool

6. Summary

This report of consultation shares all of the comments that the community of Towyn and Kinmel Bay has made as part of the Community Connections project. It provides a rich body of comments on issues, ideas and emerging focus of the Place Plan to address. The figure below is the total of all comments made, from the primary schools to people that attended the consultation events to digital comments. They show that people like the beach, park, the fair, their home and friends with community a central part of why they live here. In looking at ways to improve Towyn and Kinmel Bay, people that responded tend to identify daily things that are visible to them. Litter, dog-bins, beach cleanliness, state of roads are a number of issues people identify with. The role of parks and recreation is seen as important with respondents wanting to see bigger parks and the provision of a local swimming pool. Whilst not as dominant as some topics, the need to provide quality and diverse local services is also identified which underpins the local well-being agenda.

Figure 4 - Word clouds Created from All Postcard Responses (Schools and Wider Community)



Source: TKB Postcards

Themes

In going forward to the ideas and proposals development stage of the Place Plan process, there are some draft themes emerging from the consultation process that blend with the views of the Place Plan consultancy team. These will be developed into the visioning, themes, focus and proposals development. They are:

- **A Resourced TKB** – social, health, cultural, local services and educational infrastructure that is underpinned by environmental resilience and climate change agenda
- **A Greener TKB** – green infrastructure and practice with people at the heart of it, that includes open spaces, parks, play, streets, paths, trails and biodiversity corridors that complements the wider place agenda
- **An Active TKB** – to develop a connected community that is mobile and active with recreation, sports and well-being accessible to all, with roads becoming more people orientated
- **An Enterprising TKB** – to enable local economic development that supports young people, entrepreneurs and established businesses to grow and to play a role in a sustainable economy
- **TKB – A Destination for All** – to create a balanced place to live in and visit with the need to improve the quality of the destination experience but through local solutions that meet community needs and appeal to visitors